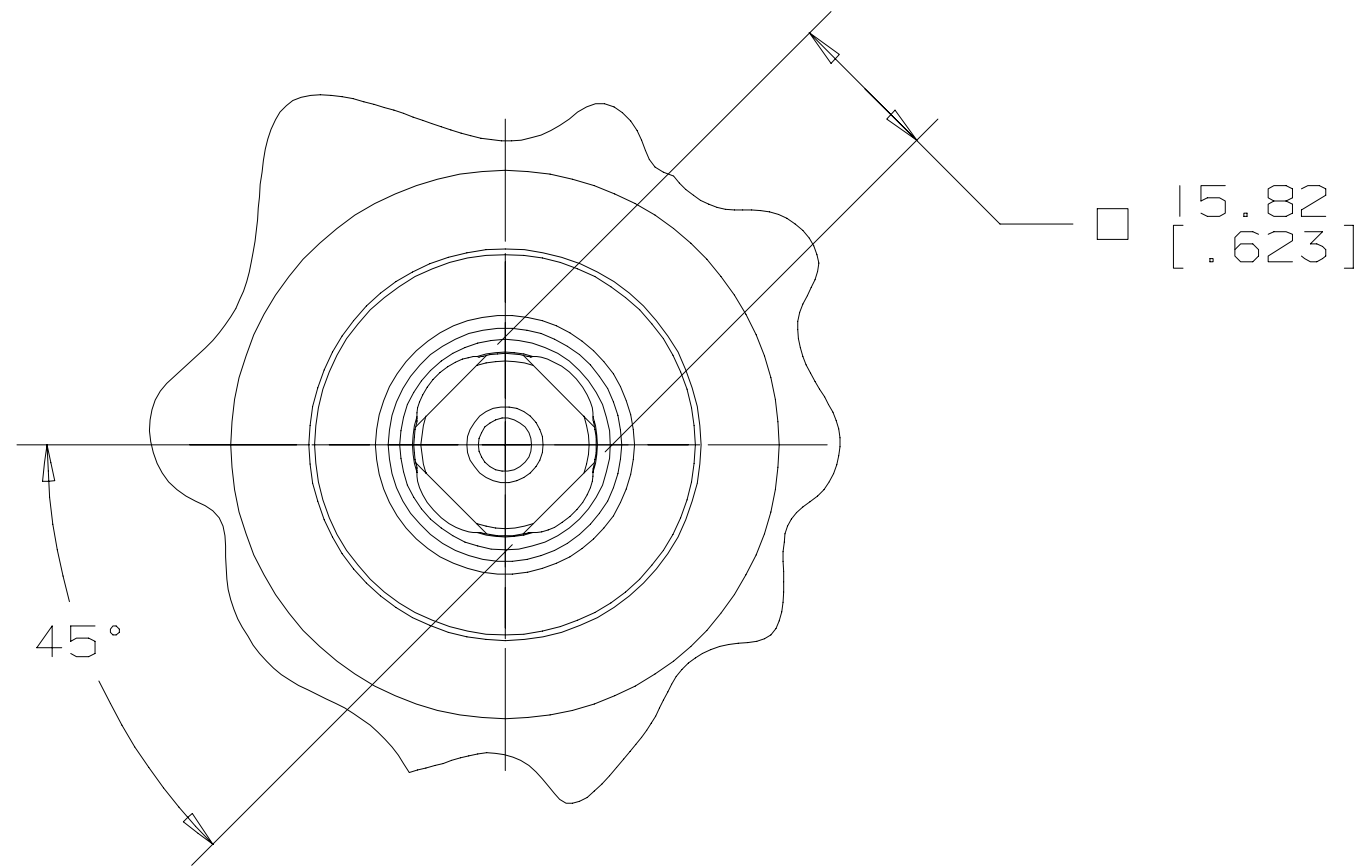
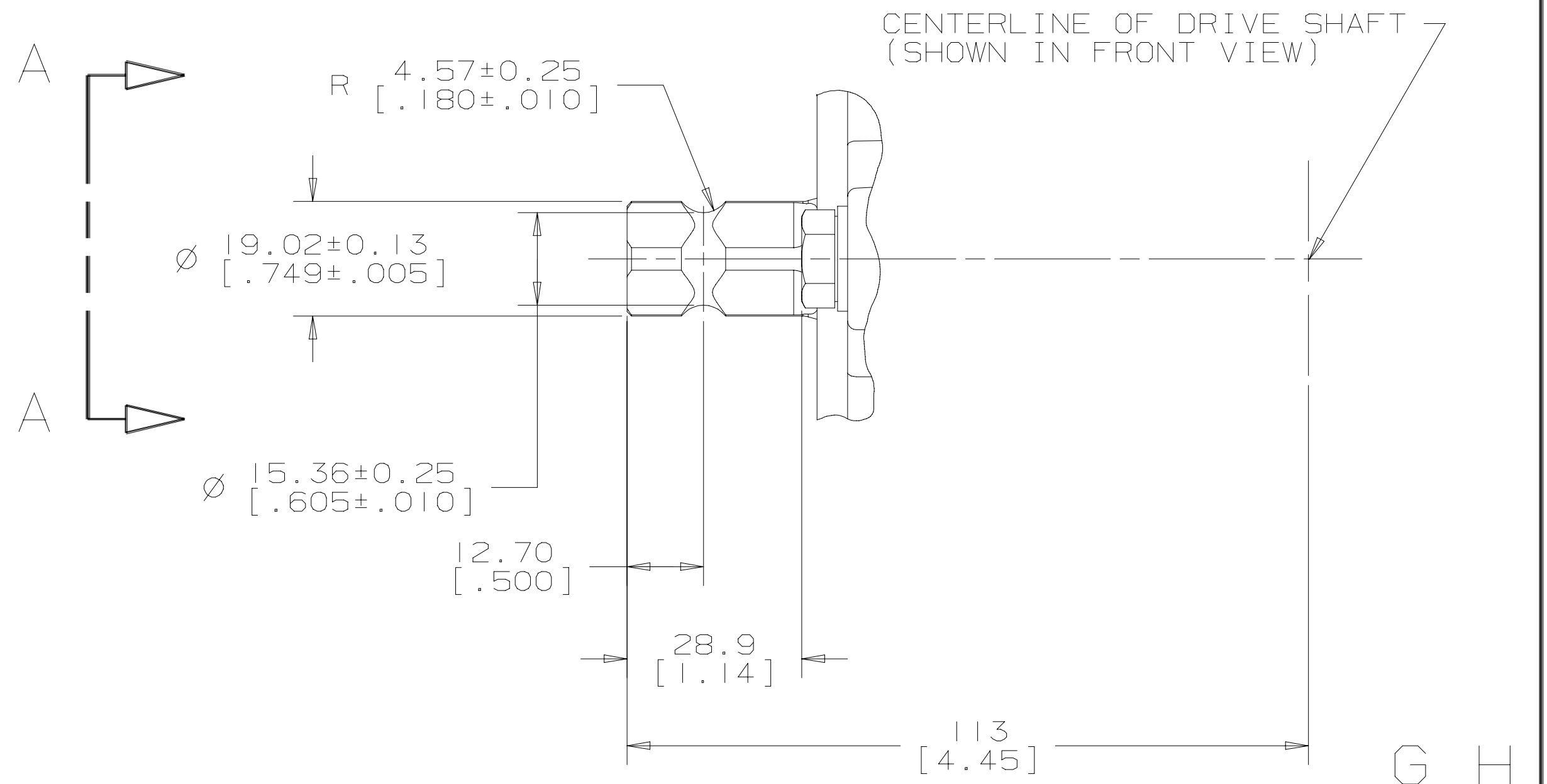



REV	DESCRIPTION	BY	CHK	DATE	ECN
A	RELEASE FOR SAMPLES AND ESTIMATE	DLL	SSW	9-28-98	M20496
B	ENGINEERING RELEASE	DLL	SSW	2-04-99	M20976



SECTION A - A  
CONTROL SHAFT SHOWN AT  
NEUTRAL POSITION



UNLESS OTHERWISE SPECIFIED ALL DIMENSIONS ARE IN INCHES <input type="checkbox"/> MILLIMETERS <input checked="" type="checkbox"/> TOLERANCES .X ± ---- .XX ± ---- .XXX ± ---- ∠ ± ---- UNSPECIFIED RADII ARE ---- UNSPECIFIED DRAFT ANGLES ARE ---- DRAWING FORMAT CADD <input checked="" type="checkbox"/> MANUAL <input type="checkbox"/>	DRAWING BASED ON ANSI Y14.5M-1982		<p>THE REPRODUCTION, DISTRIBUTION, AND UTILIZATION OF THIS DOCUMENT, AS WELL AS THE COMMUNICATION OF ITS CONTENTS TO OTHERS WITHOUT EXPLICIT AUTHORIZATION IS PROHIBITED. OFFENDERS WILL BE HELD LIABLE FOR THE PAYMENT OF DAMAGES. ALL RIGHTS RESERVED IN THE EVENT OF THE GRANT OF A PATENT, UTILITY MODEL, OR DESIGN. (PER ISO 16016)</p> 
	DRAWN BY/DATE DLL 10-2-98	MATERIAL/HEAT TREAT	
	CHECKED BY/DATE SSW 10-27-98	TITLE	
	ENGRG BY/DATE SSW 10-27-98	CONTROL SHAFT INSTALLATION	
	METALLURGY ---- BY/DATE	MICROINCHES <input type="checkbox"/> MICROMETERS <input type="checkbox"/> [MICROINCHES]	NUMBER A-292-042
	THIRD ANGLE PROJECTION	ARITHMETICAL AVERAGE <input checked="" type="checkbox"/>	SCALE 1/1 SHEET 1 OF 1
	DO NOT SCALE		