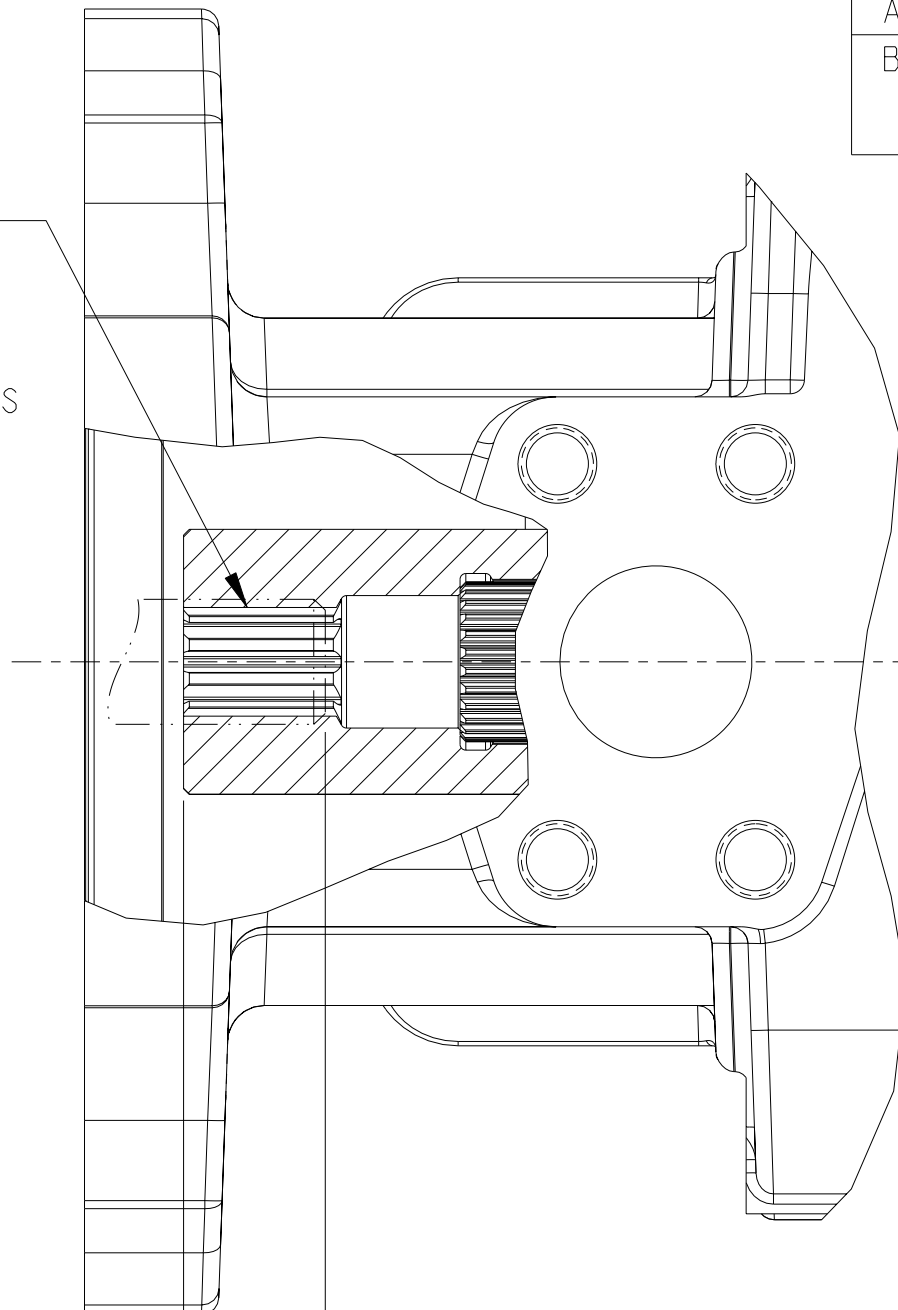


REV	DESCRIPTION	BY	CHK	DATE	ECN / MPS
A	ENGINEERING RELEASE	JMM	JMM	12-20-04	M63540
B	-1)ADDED CLASS 6 TO INTERNAL SPLINE DESCRIPTION -2)ADDED B92.1 CLASS 4, 6 AND 7 TO ACCEPTED EXTERNAL SPLINES	JMM	JMM	1-30-06	53960

Ø16.54 [.651] 9 TOOTH 30° FLAT ROOT SIDE FIT CLASS 6 16/32 INTERNAL SPLINE PER ANSI B92.1

ACCEPTS 9 TOOTH 30° FLAT ROOT SIDE FIT 16/32 EXTERNAL SPLINES PER SAE J498b CLASS 1 OR ANSI B92.1 CLASS 4, 5, 6 OR 7 WITH 31.8 [1.25] EXTENSION FROM MOUNTING FLANGE

ADDITIONAL UNITS DRIVEN BY THIS SPLINE MUST NOT REQUIRE MORE THAN 74.6 N·m [55 lbf·ft] OF TORQUE



13.1 [.52] MAX

31.9 [1.25]

287.3 [11.31]

300 [11.81]

WITH DOUBLE SHAFT SEAL HOUSING



REVIEWED FOR CLASSIFICATION PER ESP-042

-
DISTRIBUTION CODE(S)

UNLESS OTHERWISE SPECIFIED ALL DIMENSIONS ARE IN INCHES <input type="checkbox"/> MILLIMETERS (INCHES) <input checked="" type="checkbox"/>	DRAWING BASED ON ANSI Y14.5M-1982	
	THE REPRODUCTION, DISTRIBUTION, AND UTILIZATION OF THIS DOCUMENT, AS WELL AS THE COMMUNICATION OF ITS CONTENTS TO OTHERS WITHOUT EXPLICIT AUTHORIZATION IS PROHIBITED. OFFENDERS WILL BE HELD LIABLE FOR THE PAYMENT OF DAMAGES. ALL RIGHTS RESERVED IN THE EVENT OF THE GRANT OF A PATENT, UTILITY MODEL, OR DESIGN. (PER ISO 16016)	
TOLERANCES .X ± ---- .XX ± REF .XXX ± ONLY < ± ----	DRAWN JMM BY/DATE 12-23-04 CHECKED JMM BY/DATE 1-13-05 ENGRG RNA BY/DATE 1-13-05 METALLURGY ---- BY/DATE	MATERIAL/HEAT TREAT TITLE OUTPUT SHAFT INSTALLATION
UNSPECIFIED RADII ARE: ----	<input checked="" type="checkbox"/> THIRD ANGLE PROJECTION <input type="checkbox"/> DO NOT SCALE	NUMBER A-2254-006 SCALE 1/1 SHEET 1 OF 1
UNSPECIFIED DRAFT ANGLES ARE: ----	<input type="checkbox"/> MICROINCHES <input checked="" type="checkbox"/> MICROMETERS (MICROINCHES) <input checked="" type="checkbox"/> ARITHMETICAL AVERAGE	

