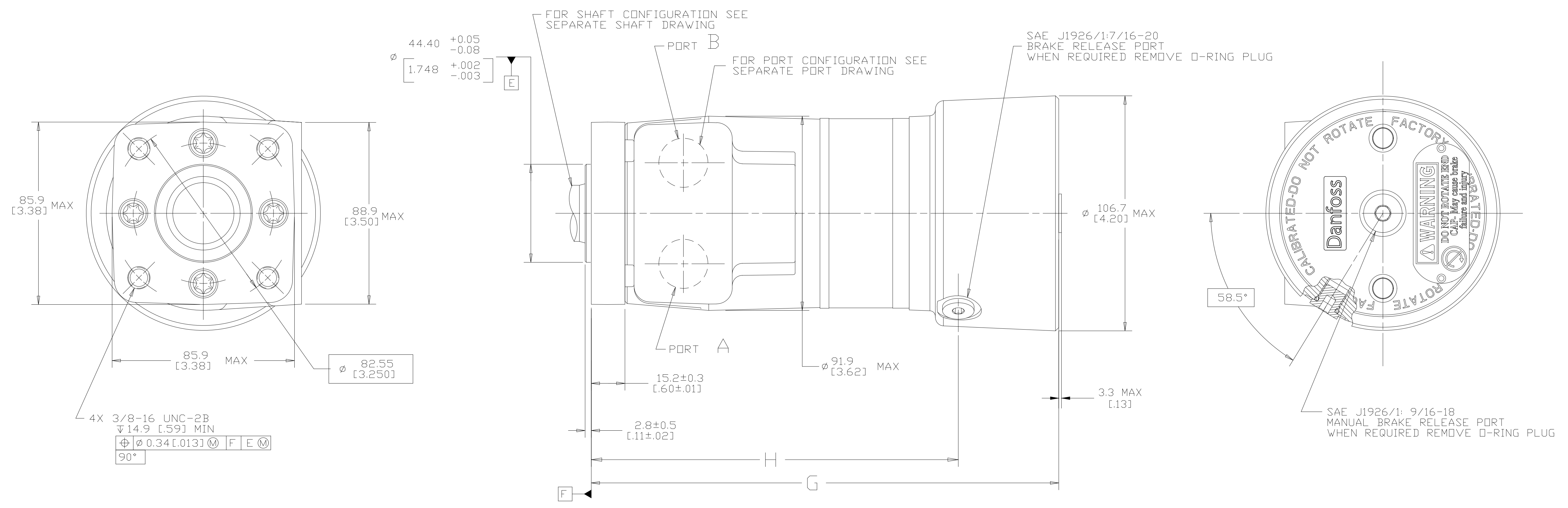


DISPL CODE	G MAX	H
022	190.2 [7.49]	143.9±0.9 [5.67±.03]
030	192.6 [7.58]	146.3±0.9 [5.76±.03]
040	195.6 [7.70]	149.3±0.9 [5.88±.03]
049	198.3 [7.81]	152.0±0.9 [5.98±.03]
062	202.2 [7.96]	155.9±0.9 [6.14±.03]
080	207.6 [8.17]	161.3±0.9 [6.35±.03]
096	212.5 [8.37]	166.2±0.9 [6.54±.03]
119	219.2 [8.63]	172.9±0.9 [6.81±.03]
149	228.3 [8.99]	181.5±0.9 [7.15±.03]
187	239.6 [9.44]	193.3±0.9 [7.61±.03]
226	251.3 [9.89]	205.0±0.9 [8.07±.03]

REV	DESCRIPTION	BY	CHK	DATE	ECN / MPS
A	ENGINEERING RELEASE	SMM		08-12-04	49031
C	REVISED	SSD		08-23-10	M79835
D	-1X(2C)REVISED PICTORIALY -2XUPDATED TO CURRENT STANDARD	YIS	SMT	06-28-11	0032984
E	(2B)...9/16-18... WAS ...7/16-20...	AAB		07-02-15	M97278
F	-1X(3C)(2C) REVISED PICTORIALY -2X(3B) ADDED 3.3 [1.13] MAX	SSP	CSG	12-28-15	0068064



NOTE

1 ROTATION STANDARD WHEN FACING SHAFT END OF MOTOR SHAFT TO ROTATE CLOCKWISE WHEN PORT "A" IS PRESSURIZED COUNTERCLOCKWISE WHEN PORT "B" IS PRESSURIZED

REVERSE WHEN FACING SHAFT END OF MOTOR, SHAFT TO ROTATE CLOCKWISE WHEN PORT "B" IS PRESSURIZED COUNTERCLOCKWISE WHEN PORT "A" IS PRESSURIZED

2 MOUNTING TYPE
BA = 4 BOLT STD: 44.40 [1.748] DIA. X 3.05 [1.20] PILDT, .375-16 UNC-2B MOUNTING HOLES ON 82.55 [3.250] DIA. B.C.

REVIEWED FOR CLASSIFICATION PER ESP-042

DRAWING BASED ON ASME Y14.5M-1994

UNLESS OTHERWISE SPECIFIED ALL DIMENSIONS ARE IN INCHES [MILLIMETERS]

TOLERANCES

XX ± ---

XXX ± ---

UNSPECIFIED RADII ARE: ---

UNSPECIFIED DRAFT ANGLES ARE: ---

D SIZE

DO NOT SCALE

ARITHMETICAL AVERAGE

SCALE 1/1 SHEET 1 OF 1

THE REPRODUCTION, DISTRIBUTION AND UTILIZATION OF THIS DOCUMENT AS WELL AS THE COMMUNICATION OF ITS CONTENTS TO OTHER WITHOUT EXPLICIT AUTHORIZATION IS PROHIBITED. OFFENDERS WILL BE HELD LIABLE FOR THE PAYMENT OF DAMAGES. ALL RIGHT RESERVED IN THE EVENT OF THE GRANT OF A PATENT, UTILITY MODEL OR DESIGN. (PER ISO 16016)

Danfoss

DRAWN BY/DATE SMM 08-17-04

CHECKED BY/DATE AGJ 08-17-04

ENGRG BY/DATE JDM 08-17-04

METALLURGY BY/DATE ---

MATERIAL/HEAT TREAT ---

TITLE T MOTOR W/BRAKE INSTALLATION

NUMBER A-1480-002