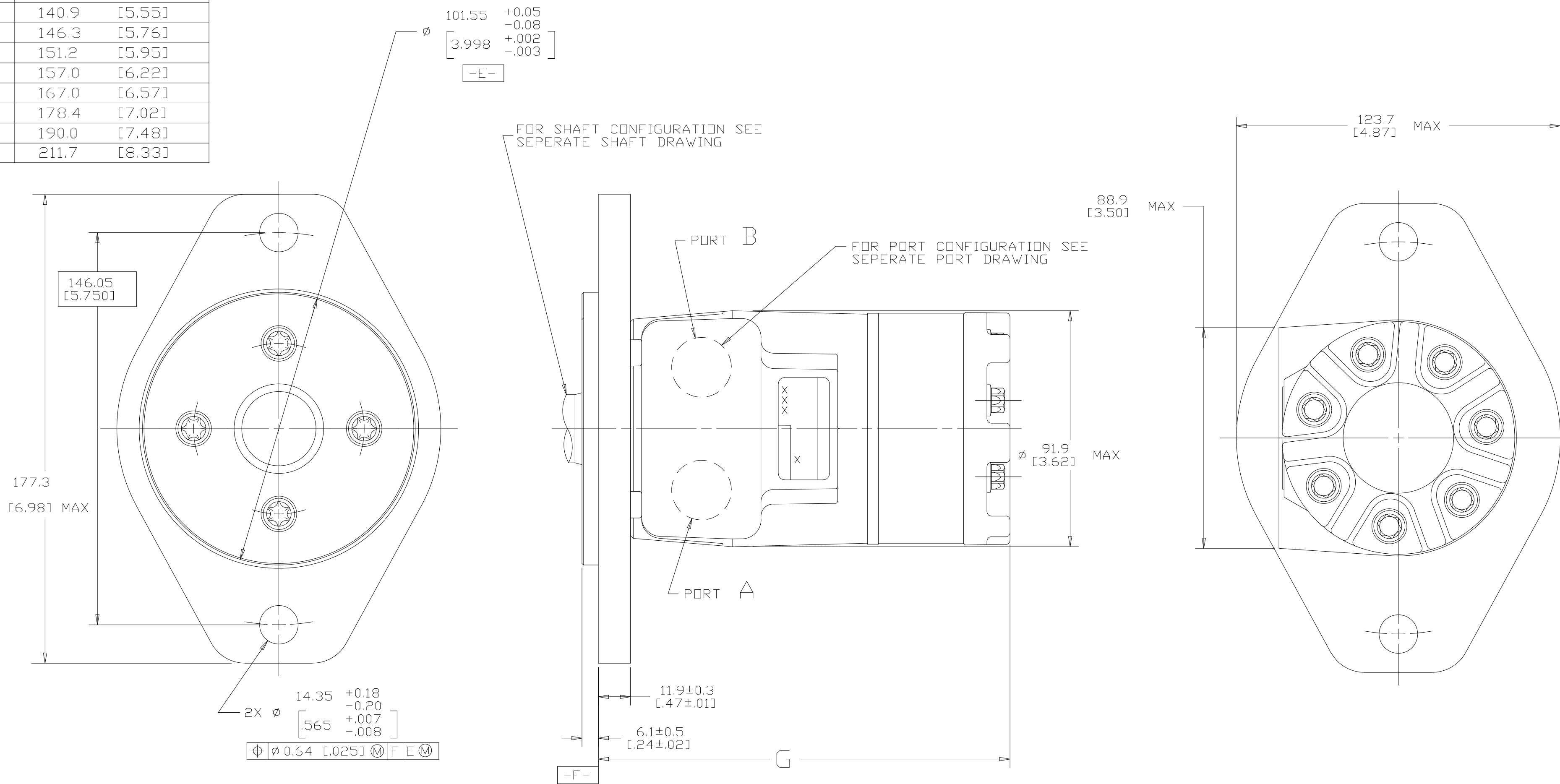


DISPL CODE	G	MAX
022	128.9	[5.08]
025	129.8	[5.11]
030	131.3	[5.17]
036	133.1	[5.24]
040	134.3	[5.29]
049	137.0	[5.40]
062	140.9	[5.55]
080	146.3	[5.76]
096	151.2	[5.95]
119	157.0	[6.22]
149	167.0	[6.57]
187	178.4	[7.02]
226	190.0	[7.48]
298	211.7	[8.33]

REV	DESCRIPTION	BY	DATE	ECN
A	ENGINEERING RELEASE	RAF	2-8-94	M11208
E	REVISED	SSD	5-26-10	M79220
F	(4A) NOTE 3 WAS CASE DRAIN :0..	SSP	12-26-15	0068068_1



- NOTE
- ROTATION STANDARD WHEN FACING SHAFT END OF MOTOR SHAFT TO ROTATE CLOCKWISE WHEN PORT "A" IS PRESSURIZED COUNTERCLOCKWISE WHEN PORT "B" IS PRESSURIZED
 REVERSE WHEN FACING SHAFT END OF MOTOR SHAFT TO ROTATE CLOCKWISE WHEN PORT "B" IS PRESSURIZED COUNTERCLOCKWISE WHEN PORT "A" IS PRESSURIZED
 - MOUNTING FLANGE DD = STANDARD, 2 BOLT: ϕ 101.6 [4.00] X 6.1 [0.24] PILOT ϕ 14.35 [0.565] HOLES ON ϕ 146.0 [5.75] BOLT CIRCLE (SAE B)
 - CASE DRAIN 00 = NO CASE DRAIN



REVIEWED FOR CLASSIFICATION OF CHARACTERISTICS PER ESP-042

UNLESS OTHERWISE SPECIFIED ALL DIMENSIONS ARE IN INCHES <input type="checkbox"/> MILLIMETERS <input checked="" type="checkbox"/>	DRAWING BASED ON ANSI Y14.5M-1982	
	THE REPRODUCTION, DISTRIBUTION AND UTILIZATION OF THIS DOCUMENT AS WELL AS THE COMMUNICATION OF ITS CONTENTS TO OTHER WITHOUT EXPLICIT AUTHORIZATION IS PROHIBITED. OFFENDERS WILL BE HELD LIABLE FOR THE PAYMENT OF DAMAGES. ALL RIGHT RESERVED IN THE EVENT OF THE GRANT OF A PATENT, UTILITY MODEL OR DESIGN. (PER ISO 16016)	
TOLERANCES X ± ---- .XX ± ---- .XXX ± ---- ∠ ± ----	DRAWN BY/DATE RAF 2/4/94 CHECKED BY/DATE SDR 2/23/94 ENGRG BY/DATE RVA 3/3/94 METALLURGY BY/DATE ----	MATERIAL/HEAT TREAT
UNSPECIFIED RADII ARE ---- UNSPECIFIED DRAFT ANGLES ARE ----	THIRD ANGLE PROJECTION	TITLE T MOTOR INSTALLATION
B SIZE	DO NOT SCALE	MICROINCHES <input type="checkbox"/> NUMBER MICROMETERS <input type="checkbox"/> A-821-014 ARITHMETICAL AVERAGE <input checked="" type="checkbox"/> SCALE 1/1 SHEET 1 OF 1

