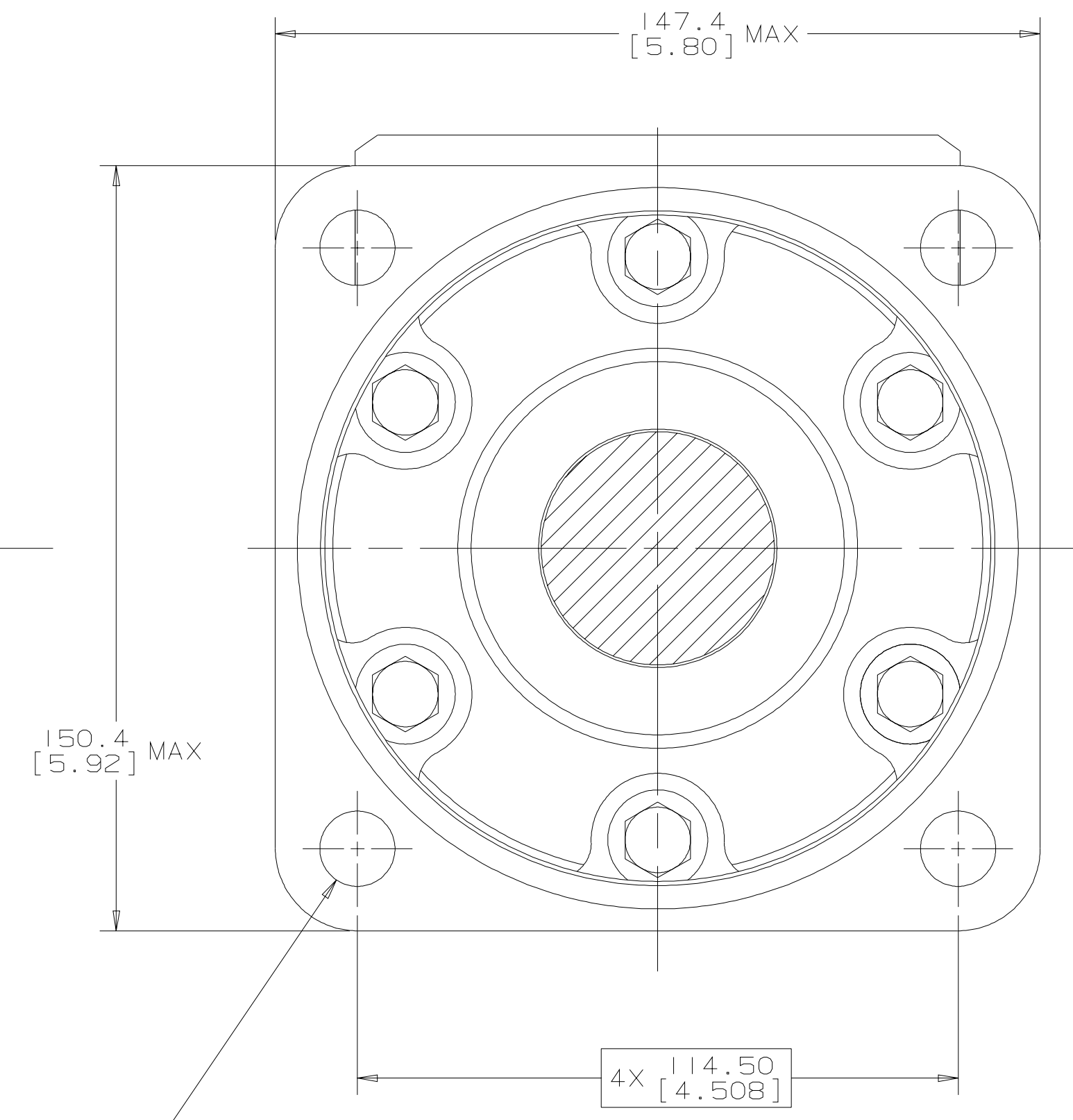
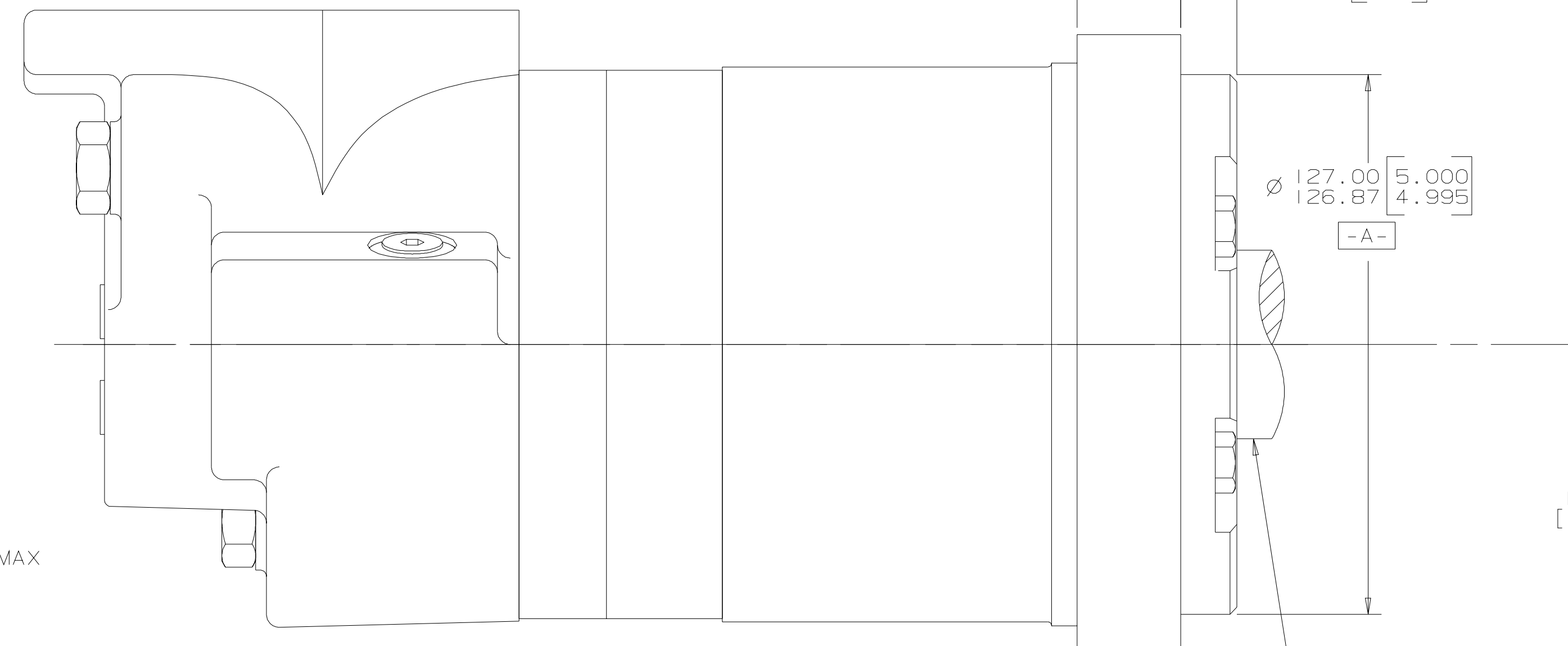
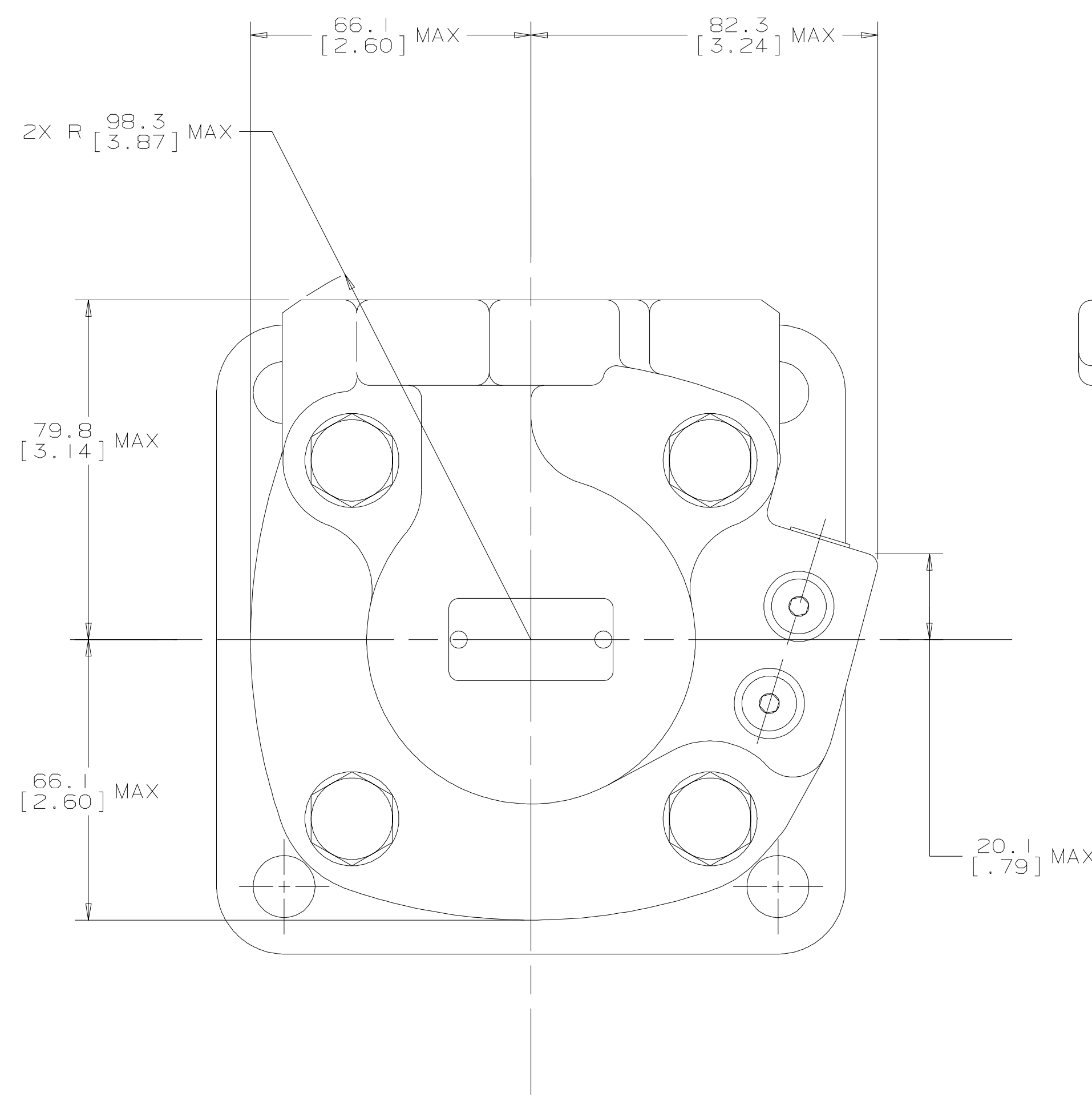
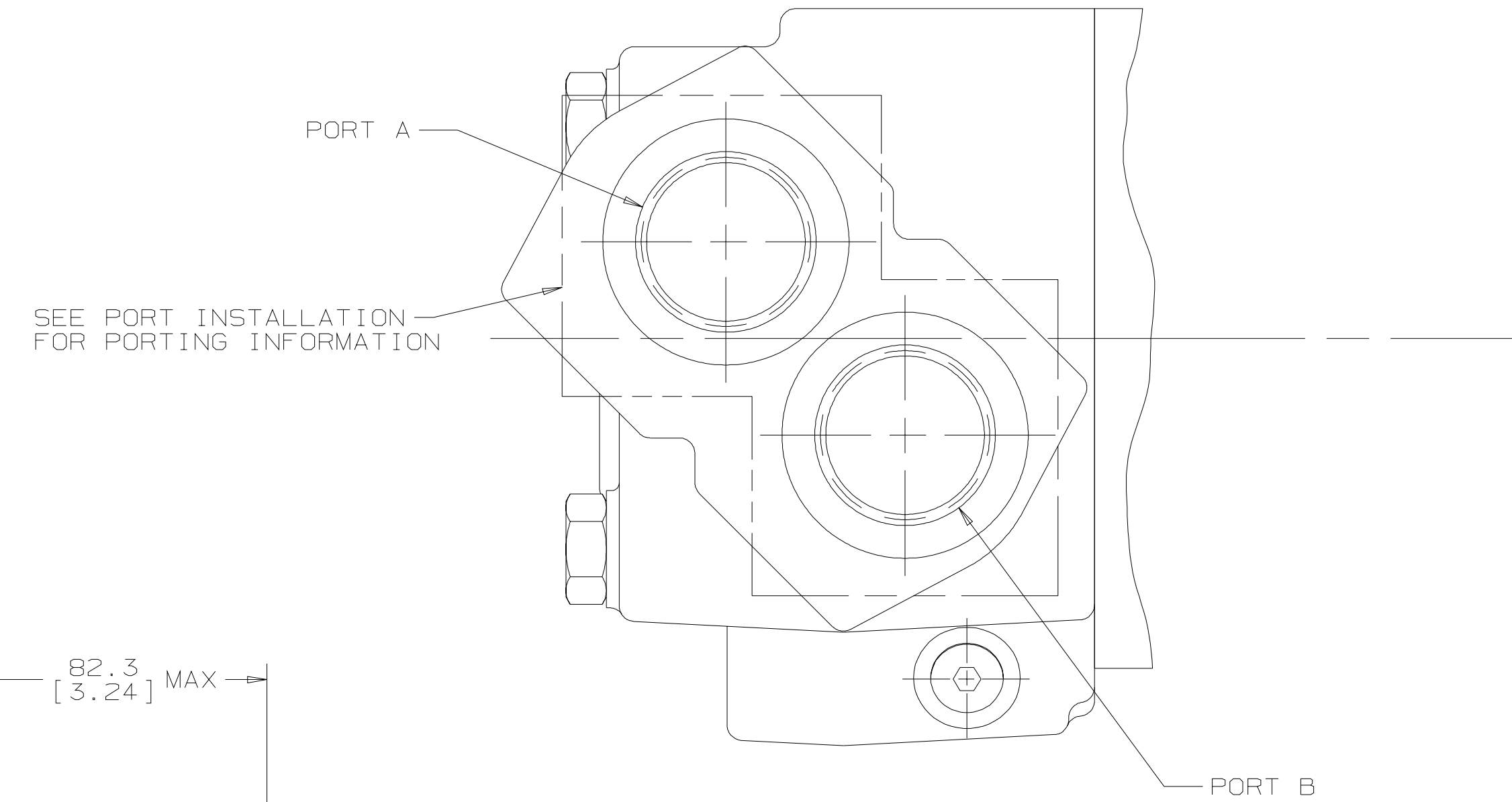


REV	DESCRIPTION	BY	CHK	DATE	ECN
A	ENGINEERING RELEASE	GCB		9-8-97	30079
B	(4A) MOUNTING TYPE WAS 'E'	AMM		12-11-06	0001664



4X Ø 14.53 [.572] / 14.14 [.557]
 ⊕ Ø0.69 [.027] M B A M

SEE SHAFT INSTALLATION

NOTE
 1 ROTATION
 STANDARD: WHEN FACING SHAFT END OF MOTOR, SHAFT TO ROTATE: CLOCKWISE WHEN PORT "A" IS PRESSURIZED COUNTERCLOCKWISE WHEN PORT "B" IS PRESSURIZED
 REVERSE: WHEN FACING SHAFT END OF MOTOR, SHAFT TO ROTATE: COUNTERCLOCKWISE WHEN PORT "B" IS PRESSURIZED CLOCKWISE WHEN PORT "A" IS PRESSURIZED
 2 MOUNTING TYPE: AE
 STANDARD: (SAE CC), 4 BOLT: Ø127.0 [5.00] PILOT Ø14.35 [.565] HOLES ON Ø162.0 [6.38] BOLT CIRCLE WITH SPECIAL O-RING GROOVE TO ACCEPT ARP-251 O-RING

G K S

UNLESS OTHERWISE SPECIFIED ALL DIMENSIONS ARE IN INCHES <input type="checkbox"/> MILLIMETERS <input checked="" type="checkbox"/>		DRAWING BASED ON ANSI Y14.5M-1982	
TOLERANCES .X +---- .XX +REF .XXX +ONLY / +----		THE REPRODUCTION, DISTRIBUTION, AND UTILIZATION OF THIS DOCUMENT, AS WELL AS THE COMMUNICATION OF ITS CONTENTS TO OTHERS WITHOUT EXPLICIT AUTHORIZATION IS PROHIBITED. OFFENDERS WILL BE HELD LIABLE FOR THE PAYMENT OF DAMAGES. ALL RIGHTS RESERVED IN THE EVENT OF THE GRANT OF A PATENT, UTILITY MODEL, OR DESIGN. (PER ISO 16016)	
DRWN BY/DATE GCB 9-9-97	CHECKED BY/DATE RAF 9-11-97	MATERIAL/HEAT TREAT	
ENGR BY/DATE VJD 9-11-97	METALLURGY BY/DATE	TITLE 6000 SERIES MOTOR INSTALL	
UNSPECIFIED DRAFT ANGLES ARE	THIRD ANGLE PROJECTION	MICROINCHES [MICROMETERS] NUMBER	A-1019-003
DRAWING FORMAT CAD <input checked="" type="checkbox"/> MANUAL <input type="checkbox"/>	DO NOT SCALE	SCALE 1/1	SHEET 1 OF 1