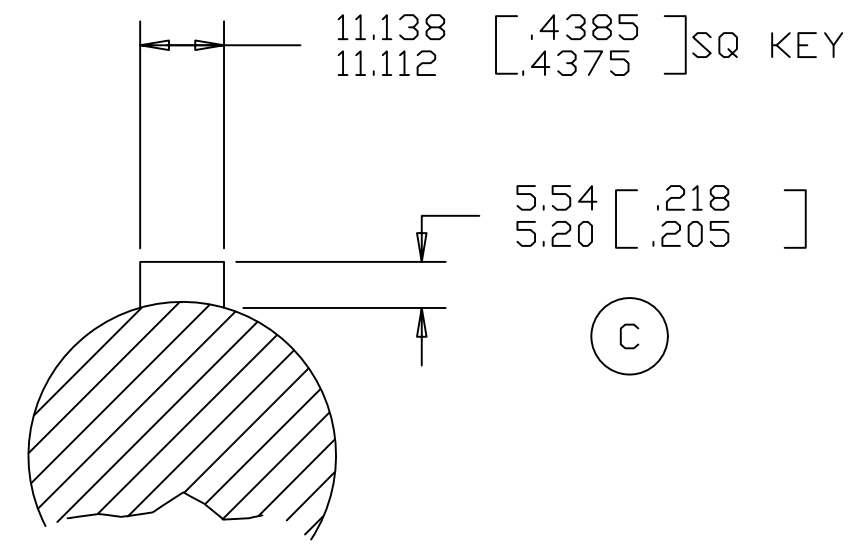
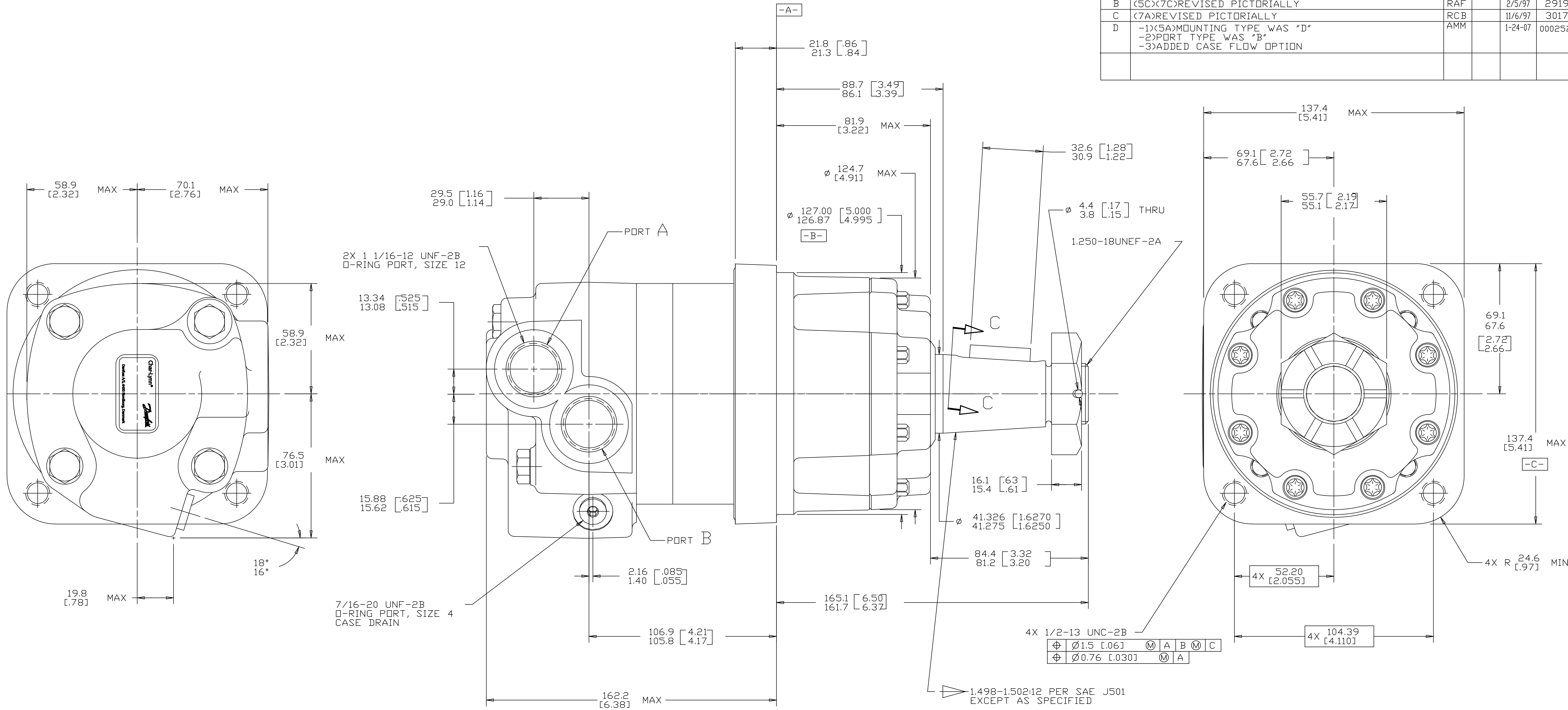


REV	DESCRIPTION	BY	CHK	DATE	ECN
A	ENGINEERING RELEASE	RAF		7/9/96	27679
B	<5C><7C>REVISED PICTORIALY	RAF		2/5/97	29191
C	<7A>REVISED PICTORIALY	RCB		11/6/97	30171
D	-1)<5A>MOUNTING TYPE WAS "D" -2)PORT TYPE WAS "B" -3)ADDED CASE FLOW OPTION	AMM		1-24-07	0002527



- NOTE
- ROTATION: STANDARD; WHEN FACING SHAFT END OF MOTOR, SHAFT TO ROTATE; CLOCKWISE WHEN PORT "A" IS PRESSURIZED; COUNTERCLOCKWISE WHEN PORT "B" IS PRESSURIZED. REVERSE; WHEN FACING SHAFT END OF MOTOR, SHAFT TO ROTATE; CLOCKWISE WHEN PORT "B" IS PRESSURIZED; COUNTERCLOCKWISE WHEN PORT "A" IS PRESSURIZED.
 - MOUNTING TYPE: 02 WHEEL, 4 BOLT: ϕ 127.00 [5.000] PILOT .500-13 UNC-2B THREADED HOLES ON ϕ 147.62 [5.812] BOLT CIRCLE
 - OUTPUT SHAFT: 02 ϕ 41.28 [1.625] TAPERED WITH 11.112 [0.4375] SQ X 31.75 [1.250] STRAIGHT KEY, 1.250-18 UNEF-2A THREAD WITH SLOTTED HEX NUT
 - PORT TYPE: AB 1.0625-12 UN-28 O-RING PORTS - STAGGERED PORTS. SIZE 12
 - CASE FLOW: 02 .4375-20 UNF-2B O-RING PORT, SIZE 4 WITH CHECK VALVE. ACCEPTS FITTING FOR SAE J1926

UNLESS OTHERWISE SPECIFIED ALL DIMENSIONS ARE IN		DRAWING BASED ON ANSI Y14.5M-1982	
INCHES <input type="checkbox"/>	MILLIMETERS <input checked="" type="checkbox"/>	THE REPRODUCTION, DISTRIBUTION AND UTILIZATION OF THIS DOCUMENT AS WELL AS THE COMMUNICATION OF ITS CONTENTS TO OTHERS WITHOUT EXPLICIT AUTHORIZATION IS PROHIBITED. OFFENDERS WILL BE HELD LIABLE FOR THE PAYMENT OF DAMAGES. ALL RIGHT RESERVED IN THE EVENT OF THE GRANT OF A PATENT, UTILITY MODEL OR DESIGN. (PER ISO 16016)	
TOLERANCES		MATERIAL/HEAT TREAT	
x ± ----	xx ± REF	DRAWN BY/DATE: RAF 7-11-96	CHECKED SDR 7-11-96
xxx ± ONLY	< ± ----	ENGRG BY/DATE: M.L.B 7-11-96	TITLE: 4000 SERIES MOTOR INSTALLATION
UNSPECIFIED RADII ARE	---	UNSPECIFIED DRAFT ANGLES ARE	---
---	---	---	---
DRAWING FORMAT CADD <input checked="" type="checkbox"/> MANUAL <input type="checkbox"/>	THIRD ANGLE PROJECTION	DO NOT SCALE	ARITHMETICAL AVERAGE
NUMBER: 110-1145-006		SCALE: 1/1 SHEET 1 OF 1	