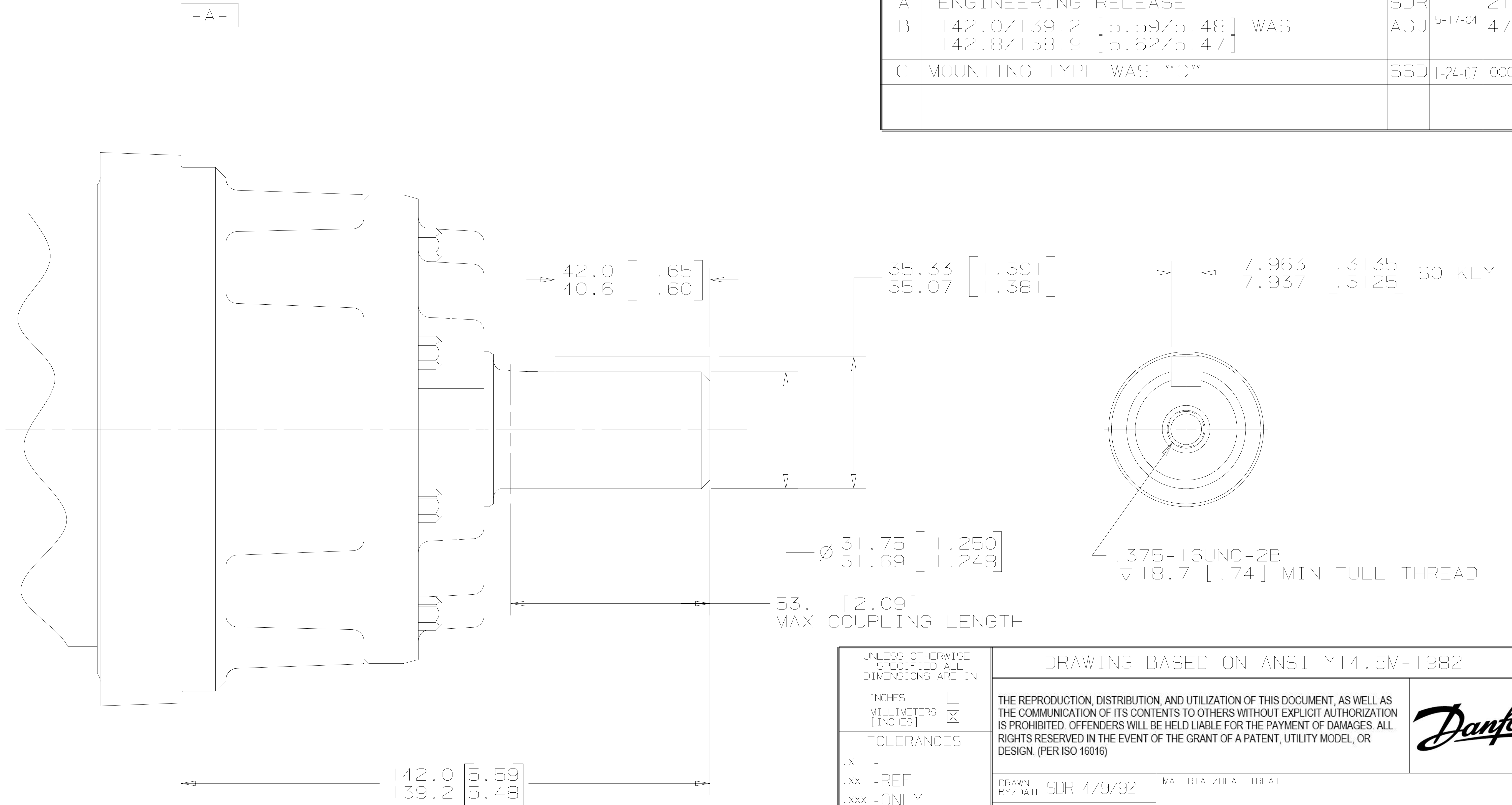



SYM	REVISION	BY	DATE	ECN
A	ENGINEERING RELEASE	SDR	2-8-92	21551
B	142.0/139.2 [5.59/5.48] WAS 142.8/138.9 [5.62/5.47]	AGJ	5-17-04	47918
C	MOUNTING TYPE WAS "C"	SSD	1-24-07	0002527



NOTE

- 1 MOUNTING TYPE: OPTION AC
- 2 OUTPUT SHAFT: OPTION 01

UNLESS OTHERWISE SPECIFIED ALL DIMENSIONS ARE IN		DRAWING BASED ON ANSI Y14.5M-1982	
INCHES <input type="checkbox"/>	MILLIMETERS [INCHES] <input checked="" type="checkbox"/>	THE REPRODUCTION, DISTRIBUTION, AND UTILIZATION OF THIS DOCUMENT, AS WELL AS THE COMMUNICATION OF ITS CONTENTS TO OTHERS WITHOUT EXPLICIT AUTHORIZATION IS PROHIBITED. OFFENDERS WILL BE HELD LIABLE FOR THE PAYMENT OF DAMAGES. ALL RIGHTS RESERVED IN THE EVENT OF THE GRANT OF A PATENT, UTILITY MODEL, OR DESIGN. (PER ISO 16016)	
TOLERANCES			
.X ±----	.XX ±REF		
.XXX ±ONLY	< ----	DRAWN BY/DATE SDR 4/9/92 CHECKED BY/DATE KJR 7-8-92 ENGRG BY/DATE RVA 7-31-92 METALLURGY BY/DATE -----	MATERIAL/HEAT TREAT
UNSPECIFIED RADII ARE	UNSPECIFIED DRAFT ANGLES ARE	THIRD ANGLE PROJECTION	TITLE 4000 SERIES MOTOR SHAFT INSTALLATION
DRAWING FORMAT CADD <input checked="" type="checkbox"/> MANUAL <input type="checkbox"/>	DO NOT SCALE	MICROINCHES <input checked="" type="checkbox"/> MICROMETERS [MICROINCHES] <input type="checkbox"/> ARITHMETICAL AVERAGE <input checked="" type="checkbox"/>	NUMBER A-607-001
		SCALE 1/1	SHEET 1 OF 1