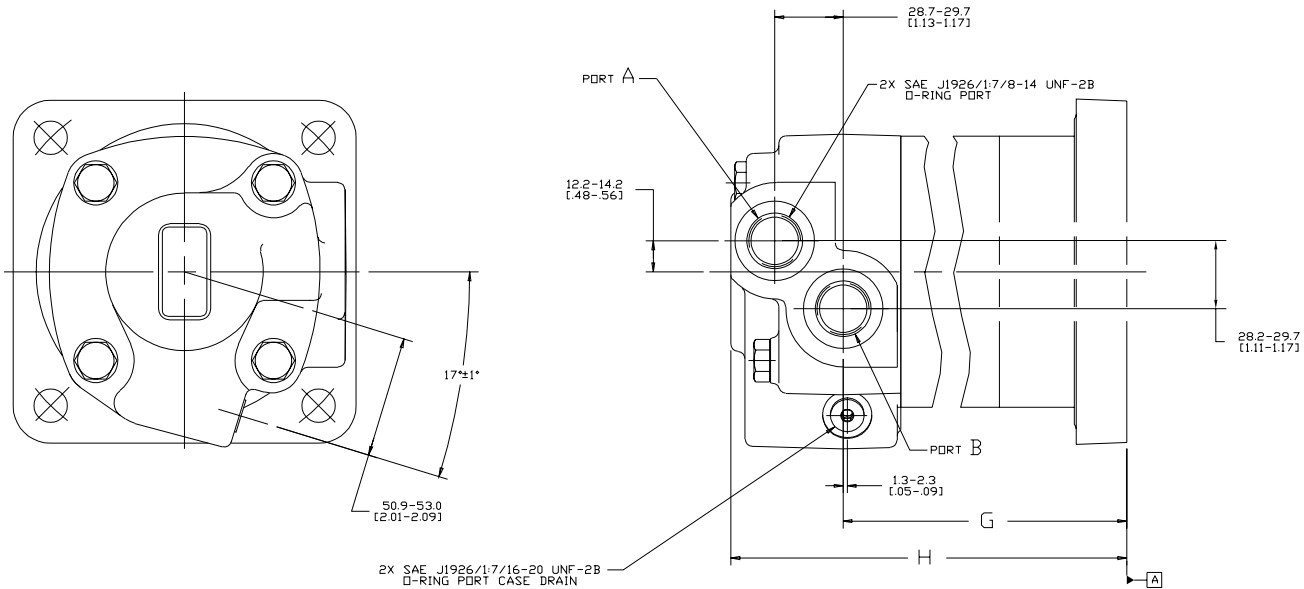


8			7		
MOUNTING TYPE AB & AM			MOUNTING TYPE AF & AJ		
DISP	G	H MAX	DISP	G	H MAX
067	157.5-159.2 [6.20-6.27]	214.4 [8.441]	067	161.6-163.4 [6.36-6.43]	218.6 [8.61]
080	161.5-163.2 [6.36-6.43]	218.4 [8.601]	080	165.7-167.5 [6.52-6.59]	222.7 [8.77]
099	167.9-169.6 [6.61-6.68]	224.7 [8.85]	099	172.0-173.8 [6.77-6.84]	229.0 [9.01]
125	176.4-178.1 [6.94-7.01]	233.2 [9.18]	125	180.5-182.3 [7.11-7.18]	237.5 [9.35]
150	167.9-169.6 [6.61-6.68]	224.7 [8.85]	150	172.0-173.8 [6.77-6.84]	229.0 [9.01]
171	172.2-174.0 [6.78-6.85]	229.1 [9.02]	171	176.4-178.2 [6.94-7.02]	233.3 [9.19]
190	176.4-178.1 [6.94-7.01]	233.2 [9.18]	190	180.5-182.3 [7.11-7.18]	237.5 [9.35]
240	187.1-188.8 [7.36-7.43]	243.9 [9.60]	240	191.2-193.0 [7.53-7.60]	248.2 [9.77]
301	199.9-201.6 [7.87-7.94]	256.8 [10.11]	301	204.0-205.9 [8.03-8.10]	261.1 [10.28]
342	208.7-210.4 [8.22-8.28]	265.7 [10.46]	342	212.8-214.6 [8.38-8.45]	269.7 [10.62]
381	217.0-218.7 [8.54-8.61]	273.9 [10.78]	381	221.1-222.9 [8.71-8.78]	278.1 [10.95]

REV	DESCRIPTION	BY	CHK	DATE	ECN
A	ENGINEERING RELEASE	AGJ		7-12-02	41743
B	REVISED	AGJ		9-30-03	45313
C	(7)ADDED MOUNTING TYPE B	SRK		7-01-04	M62263
D	REVISED TABULATION BLOCKS	AGJ		5-17-04	47918
E	-1>(2B)PORT OPTION WAS "L" -2>ADDED CASE FLOW OPTION "02" -3>UPDATED DISP VALUES AND MOUNTING TYPE IN THE TABLE	AMM		1-24-07	0002527
F	REVISED	YIS	CSG	1-18-12	M84474



NOTES  
 1 PORTS - OPTION AA  
 2 CASE FLOW - OPTION 02

**REVIEWED FOR CLASSIFICATION PER ESP-042**

UNLESS OTHERWISE SPECIFIED ALL DIMENSIONS ARE IN INCHES		DRAWING BASED ON ASME Y14.5M-1994	
MILLIMETERS		EATON CORPORATION - CONFIDENTIAL AND PROPRIETARY	
TOLERANCES		NOTICE TO PERSONS RECEIVING THIS DRAWING: THIS DRAWING IS THE PROPERTY OF EATON CORPORATION AND IS NOT TO BE REPRODUCED OR TRANSMITTED IN ANY FORM OR BY ANY MEANS, ELECTRONIC OR MECHANICAL, INCLUDING PHOTOCOPYING, RECORDING, OR BY ANY INFORMATION STORAGE AND RETRIEVAL SYSTEM, WITHOUT THE WRITTEN PERMISSION OF EATON CORPORATION. EATON CORPORATION, 10000 EATON DRIVE, WARREN, MI 48090-1000	
X ±	±0.005	XX ±	±0.002
XXX ±	±0.001	XXXX ±	±0.0005
UNSPECIFIED	±0.005	UNSPECIFIED	±0.005
DRAFT ANGLES ARE:	30°	DRAFT ANGLES ARE:	30°
D SIZE	DO NOT SCALE	D SIZE	DO NOT SCALE

**4000 SERIES MOTOR PORT INSTALLATION**

**A-556-017**

SCALE 1/1 SHEET 1 OF 1