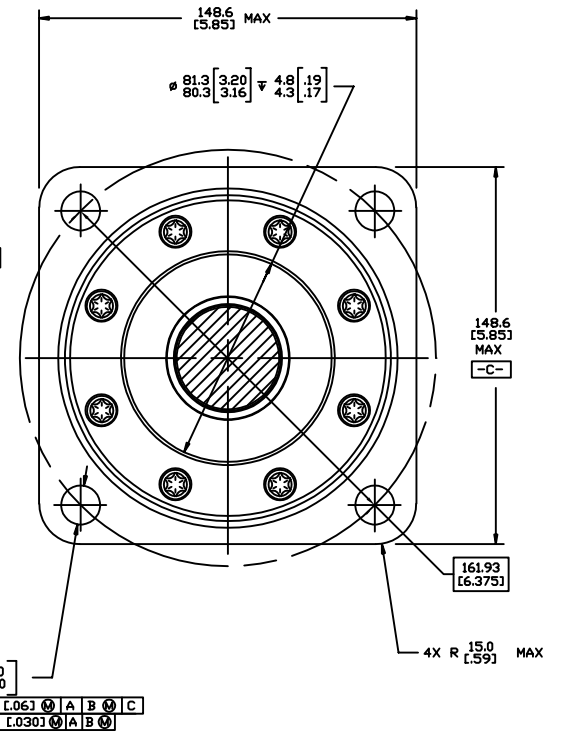
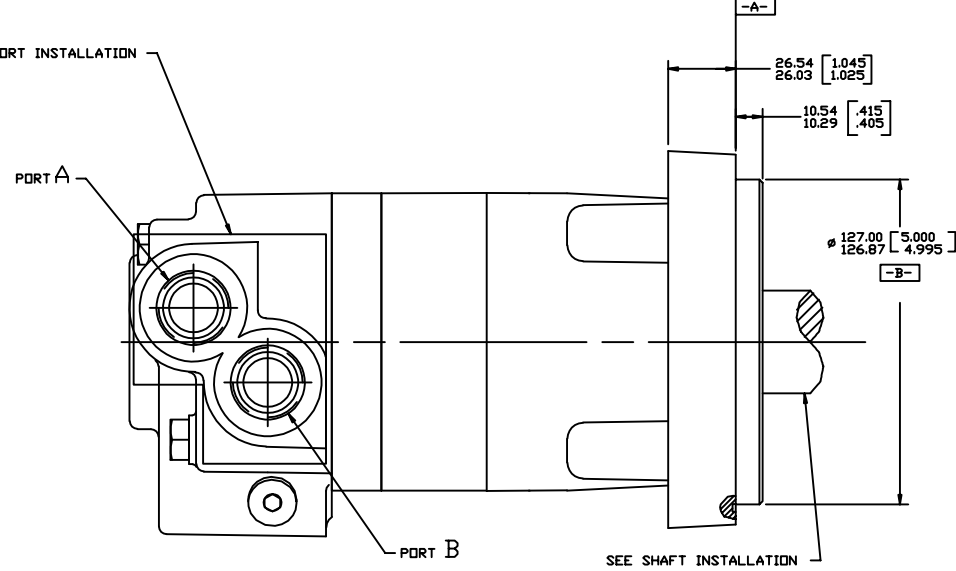
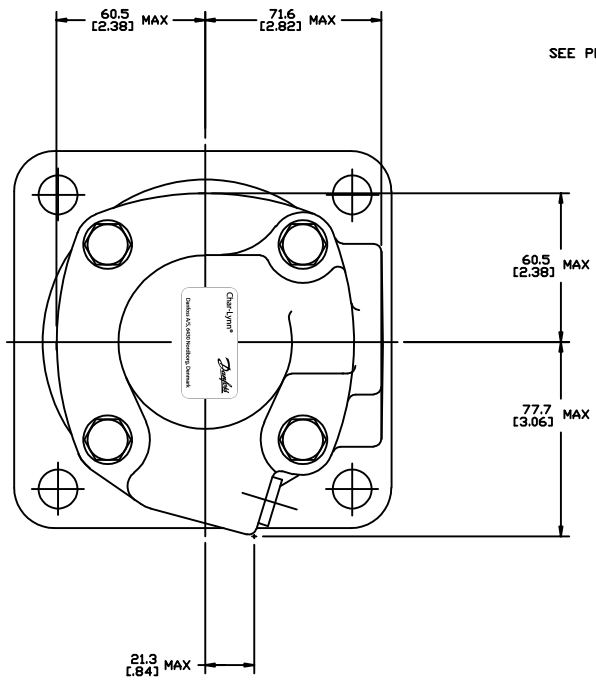


SYM	REVISION	BY	DATE	ECN
A	ENGINEERING RELEASE	GCB	6-28-93	M8319
B	-1X(2)ADD ϕ 81.3 [3.20] \sqrt 1.8 [0.19] [3.16] \sqrt 4.3 [0.17]	AGJ	3-8-94	M11397
	-2X(3)10.54/10.29 [4.15/4.05] WAS 12.57/12.31 [4.98/4.85]			
C	(7B)REMOVED 18"/16"	AGJ	11-22-95	27499
D	(5CX7C)REVISED PICTORIALY	RAF	8-5-97	29191
E	(5A)MOUNTING TYPE WAS 'J'	SSD	1-24-07	0002527
F	REVISED FOR ASSEMBLY STACKUP	AAB	7-12-10	M79580A



NOTE

1 ROTATION: STANDARD; WHEN FACING SHAFT END OF MOTOR, SHAFT TO ROTATE; CLOCKWISE WHEN PORT 'A' IS PRESSURIZED; COUNTERCLOCKWISE WHEN PORT 'B' IS PRESSURIZED

REVERSE; WHEN FACING SHAFT END OF MOTOR, SHAFT TO ROTATE; COUNTERCLOCKWISE WHEN PORT 'B' IS PRESSURIZED; CLOCKWISE WHEN PORT 'A' IS PRESSURIZED

2 MOUNTING TYPE: AJ
STANDARD, 4 BOLT, 127.00 [5.000] PILOT DIA.
15.25 [0.601] DIA. HOLES ON 161.92 [6.375] DIA. BOLT CIRCLE. 'SAE C' WITH SPECIAL O-RING GROOVE TO ACCEPT ARP-251 O-RING

REVIEWED FOR CLASSIFICATION PER ESP-042

DRAWING BASED ON ANSI Y14.5M-1982

UNLESS OTHERWISE INDICATED ALL DIMENSIONS ARE IN INCHES	<input type="checkbox"/> FRACTIONS	<input type="checkbox"/> DECIMALS	<input type="checkbox"/> MIXED
TOLERANCES			
XX ± REF	SDR 4-24-93	INTERNAL/HEAT TREAT	
XXX ± ONLY	SDR 6-28-93	EXTERNAL/HEAT TREAT	
UNSPECIFIED MADE A/C	SDR 6-28-93	TITLE	4000 MOTOR INSTALLATION
UNSPECIFIED METALLURGY BY/ONE		REVISIONS	NUMBER
UNSPECIFIED SHAFT ANGLES A/C		THIRD ANGLE PROJECTION	DO NOT SCALE
D SIZE	DO NOT SCALE	APPROVED SIGNATURE	SCALE 1/1 SHEET 1 OF 1

Danfoss

A-748