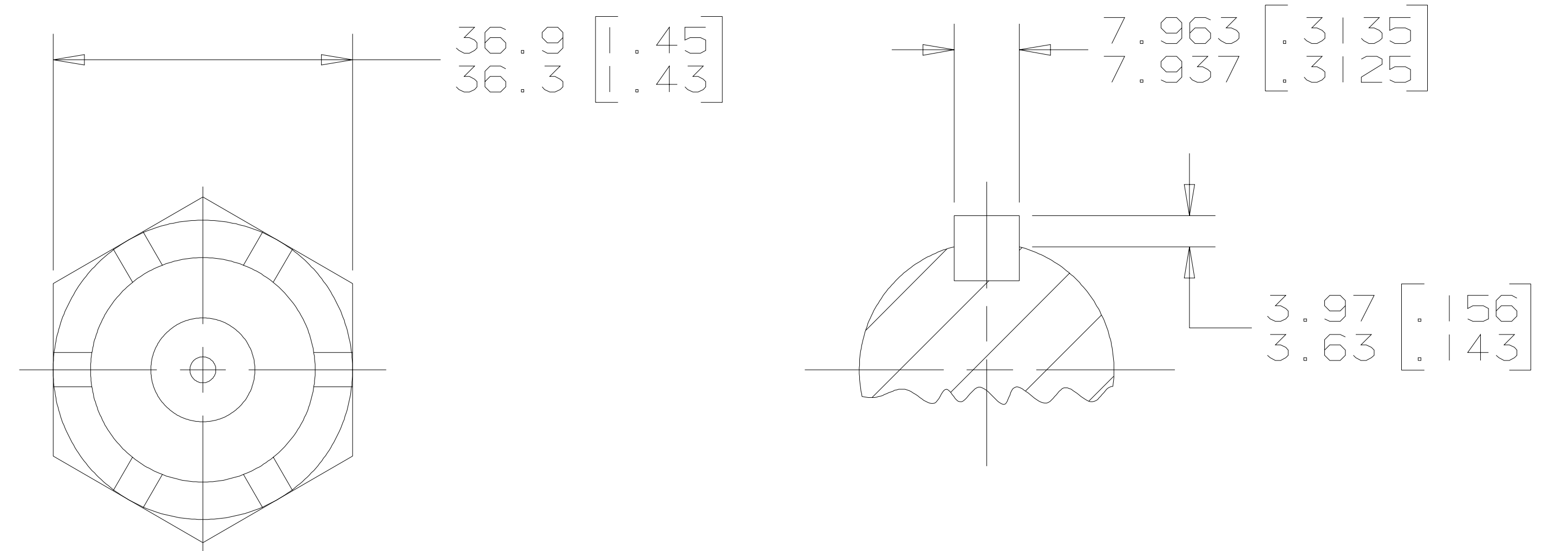
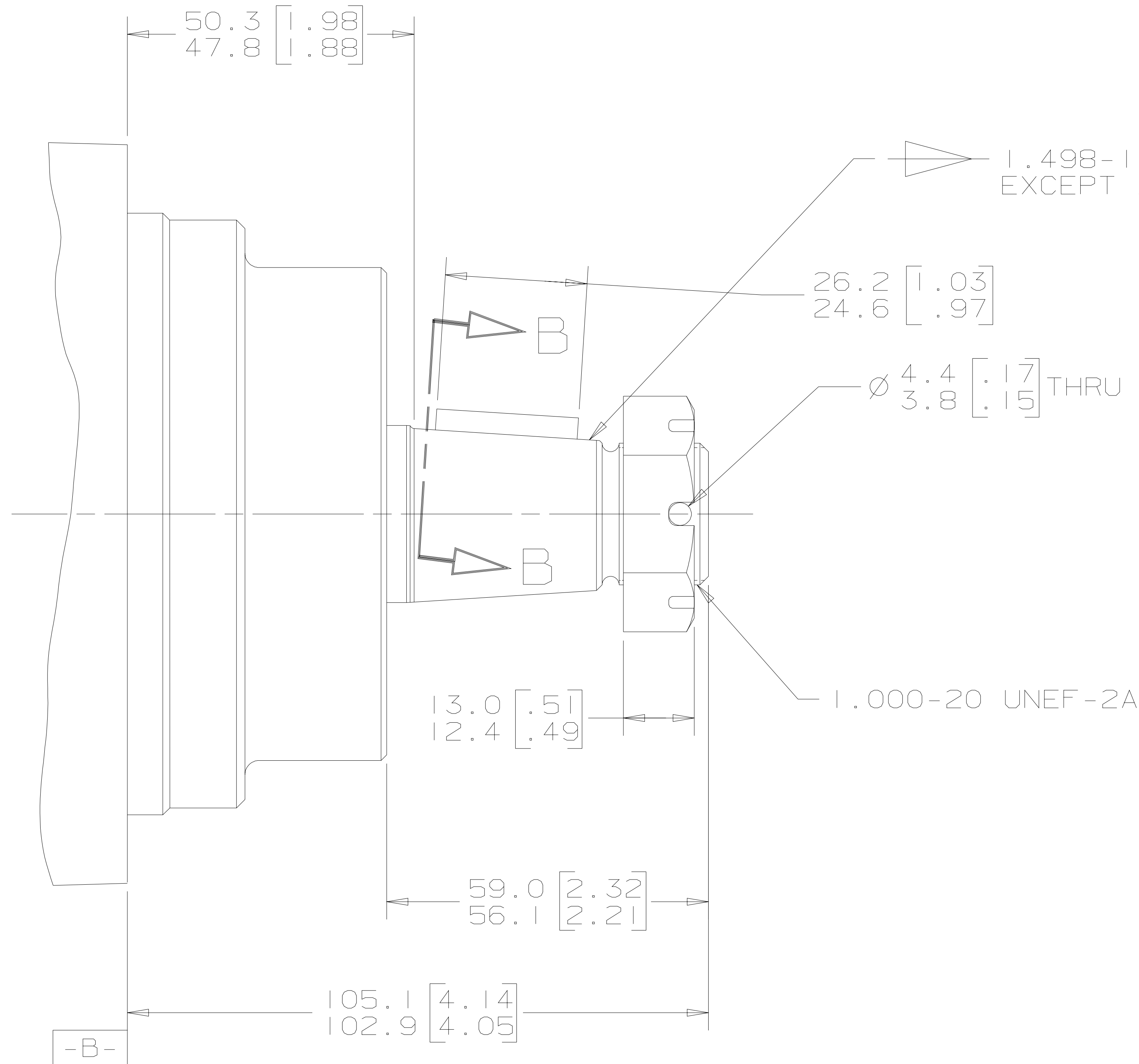


REV	DESCRIPTION	BY	DATE	ECN
A	ENGINEERING RELEASE	KJR	11-17-93	M8845
B	REVISED PICTORIALY	JMS	7-29-99	33164
C	REVISED PICTORIALY	MLL	3-28-01	36655
D	NOTE 1 WAS MOUNTING TYPE: OPTION P	AGJ	5-13-02	41044
E	REVISED PICTORIALY	MLL	10-22-01	39485
F	REVISED	AGJ	5-17-04	47918



SECTION B-B

G K S

NOTE

- 1 MOUNTING TYPE: OPTION AP
- 2 OUTPUT SHAFT: OPTION O3

UNLESS OTHERWISE SPECIFIED ALL DIMENSIONS ARE IN INCHES <input type="checkbox"/> MILLIMETERS [INCHES] <input checked="" type="checkbox"/>	DRAWING BASED ON ANSI Y14.5M-1982	
	THE REPRODUCTION, DISTRIBUTION, AND UTILIZATION OF THIS DOCUMENT, AS WELL AS THE COMMUNICATION OF ITS CONTENTS TO OTHERS WITHOUT EXPLICIT AUTHORIZATION IS PROHIBITED. OFFENDERS WILL BE HELD LIABLE FOR THE PAYMENT OF DAMAGES. ALL RIGHTS RESERVED IN THE EVENT OF THE GRANT OF A PATENT, UTILITY MODEL, OR DESIGN. (PER ISO 16016)	
<b>TOLERANCES</b> .X ± ---- .XX ± REF .XXX ± ONLY < ± ----	DRAWN BY/DATE KJR 11/17/93 CHECKED BY/DATE AGJ 11-22-93	MATERIAL/HEAT TREAT
UNSPECIFIED RADII ARE ---- UNSPECIFIED DRAFT ANGLES ARE ---- DRAWING FORMAT CADD <input checked="" type="checkbox"/> MANUAL <input type="checkbox"/>	ENGRG BY/DATE METALLURGY BY/DATE THIRD ANGLE PROJECTION DO NOT SCALE	TITLE 2000 SERIES MOTOR SHAFT INSTALLATION NUMBER A-801-003
	MICROINCHES <input type="checkbox"/> MICROMETERS [MICROINCHES] <input type="checkbox"/> ARITHMETICAL AVERAGE <input checked="" type="checkbox"/>	SCALE 1/1 SHEET 1 OF 1

