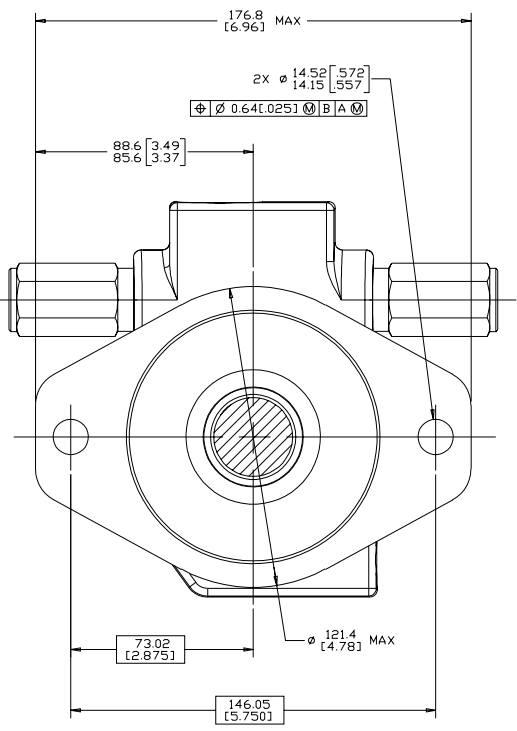
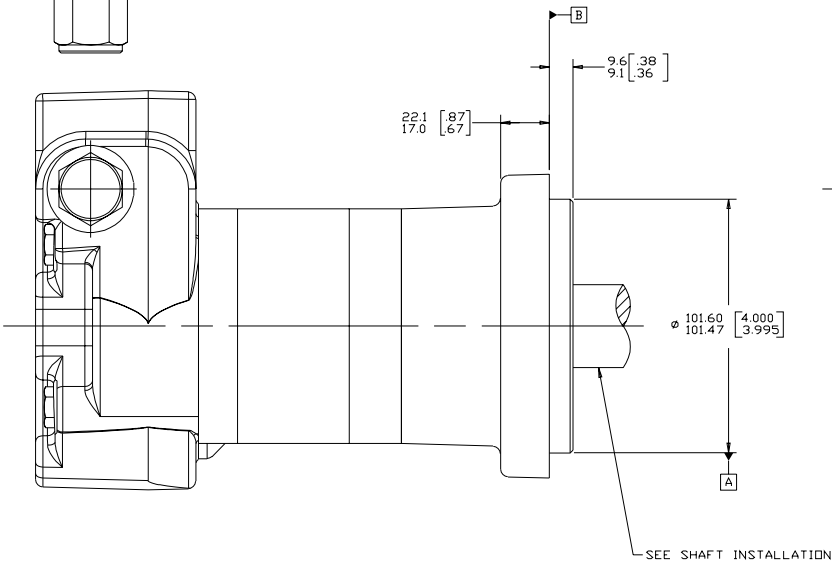
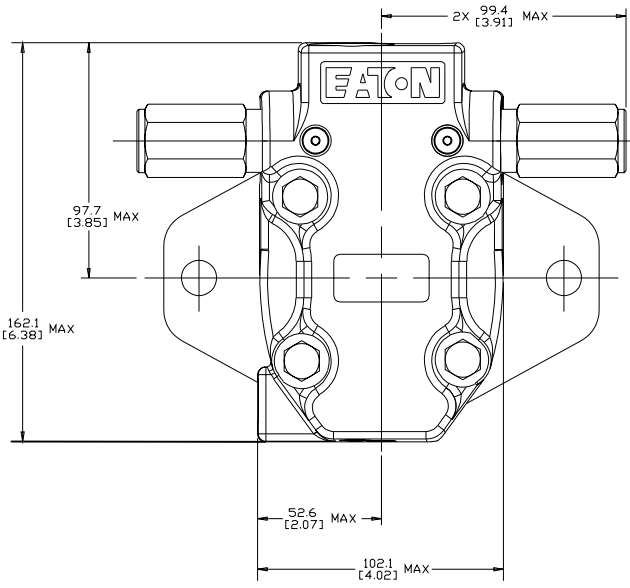
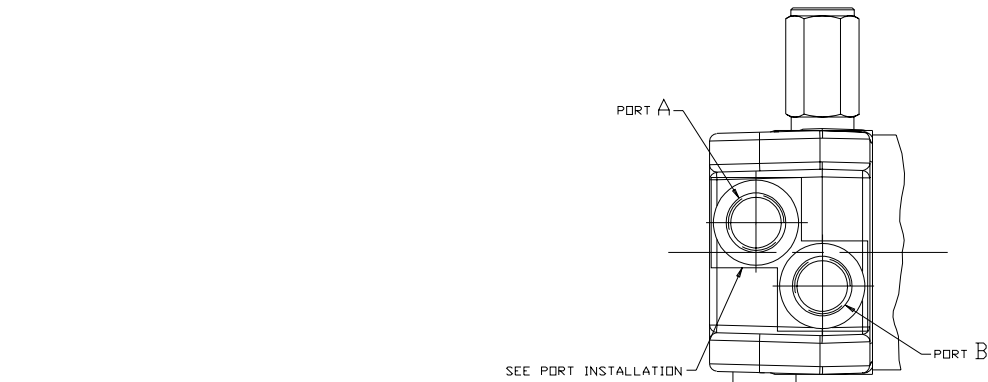


REV	DESCRIPTION	BY	CHK	DATE	ECN
A	ENGINEERING RELEASE	AGJ		12-09-03	M60463
B	(BB)96.5[3.80] MAX - WAS - 95.0[3.74] MAX	MGF		4-2-04	47302
C	REVISED AS PER STACK-UP	SMT	AAB	02-08-13	M88265



NOTE

1 ROTATION:
 STANDARD: WHEN FACING SHAFT END OF MOTOR, SHAFT TO ROTATE;
 CLOCKWISE WHEN PORT "A" IS PRESSURIZED
 COUNTERCLOCKWISE WHEN PORT "B" IS PRESSURIZED
 REVERSE: WHEN FACING SHAFT END OF MOTOR, SHAFT TO ROTATE;
 CLOCKWISE WHEN PORT "B" IS PRESSURIZED
 COUNTERCLOCKWISE WHEN PORT "A" IS PRESSURIZED

2 MOUNTING TYPE: AF
 STANDARD, 2 BOLT: ϕ 101.6 [4.00] PILOT
 ϕ 14.35 [0.565] HOLES ON ϕ 146.0 [5.75] BOLT CIRCLE *SAE B*

REVIEWED FOR CLASSIFICATION PER ESP-042

UNLESS OTHERWISE SPECIFIED ALL DIMENSIONS ARE IN INCHES <input type="checkbox"/> MILLIMETERS <input checked="" type="checkbox"/>	DRAWING BASED ON ASME Y14.5M-1994	
TOLERANCES	NOTICE TO PERSONS RECEIVING THIS DRAWING	
X ±	FOR MATERIALS, UNLESS OTHERWISE SPECIFIED, THE MATERIALS AND FINISHES TO BE USED SHALL BE AS SHOWN ON THE DRAWING. THE MANUFACTURER SHALL BE RESPONSIBLE FOR OBTAINING THE MATERIALS AND FINISHES TO BE USED ON THE DRAWING.	
XX ±	BY DATE: 02-08-13	MATERIAL HEAT TREAT
XXX ±	CHECKED BY DATE: 02-08-13	
UNSPECIFIED	ENG: [blank]	TITLE
RADI ARC:	BY DATE: [blank]	2000 SERIES MOTOR INSTALLATION
UNSPECIFIED	REWORK BY DATE: [blank]	NUMBER
DRAFT ANGLE ARE:	THIRD ANGLE PROJECTION	A-667-018
D SIZE	DO NOT SCALE	SCALE 1/1 SHEET 1 OF 1