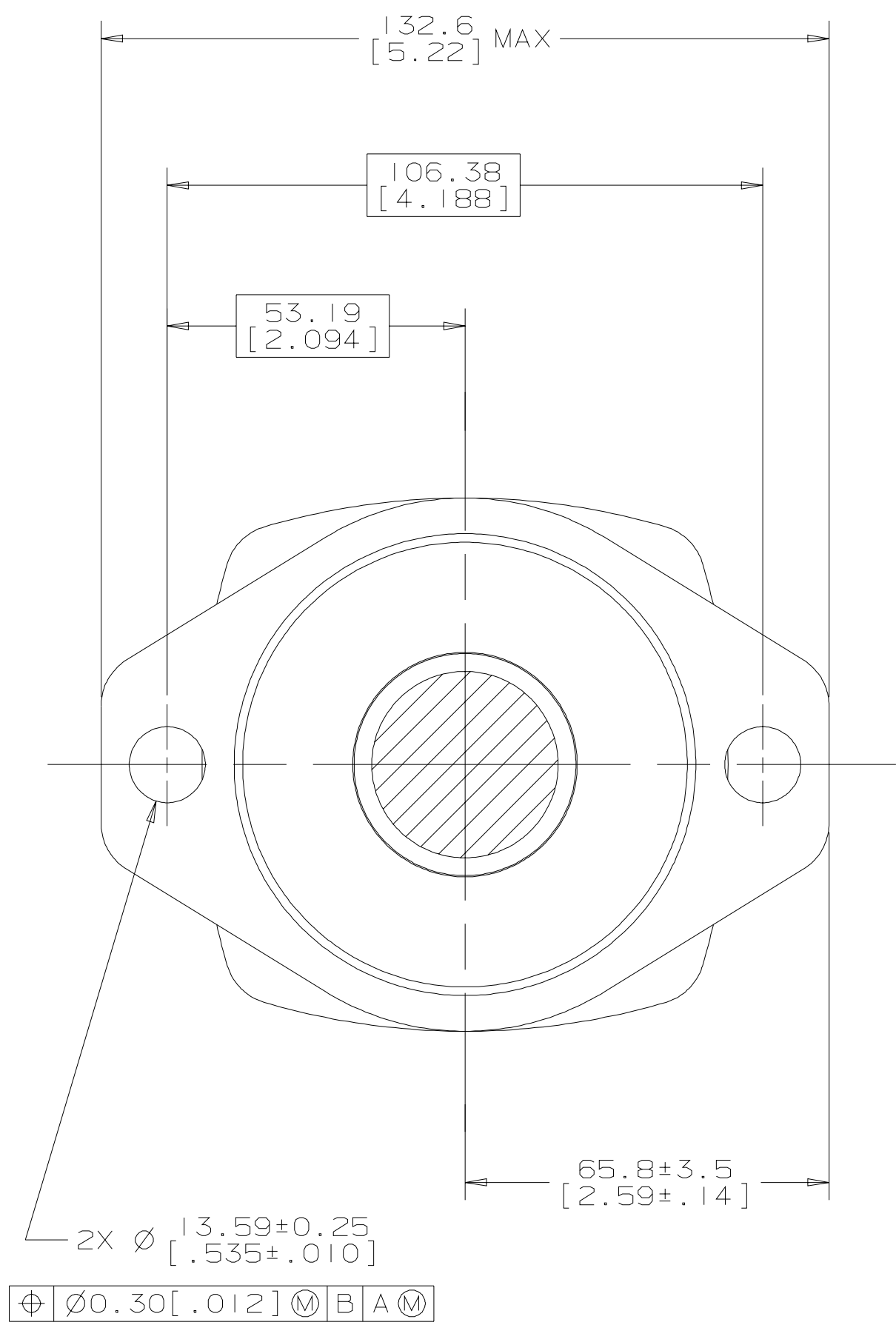
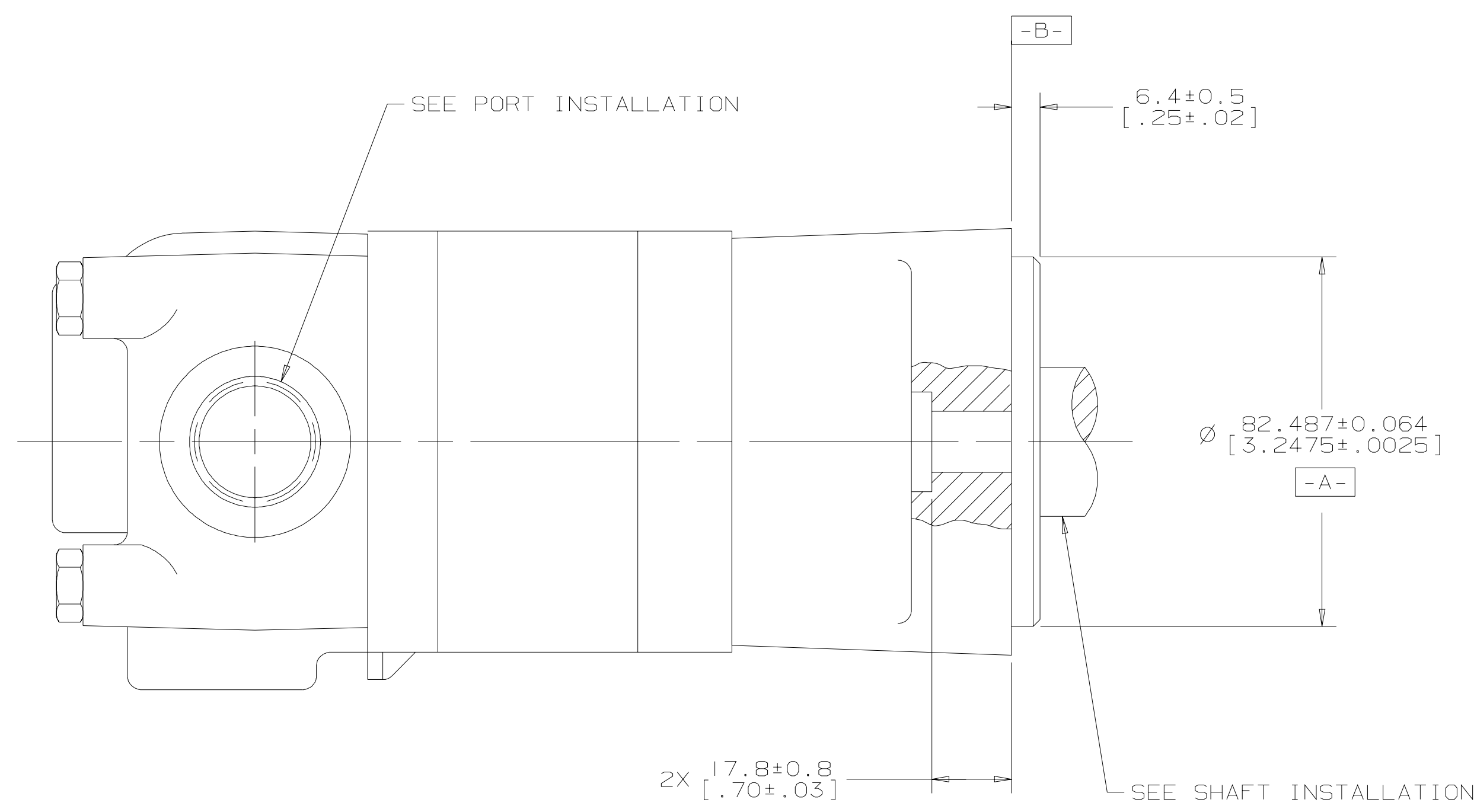
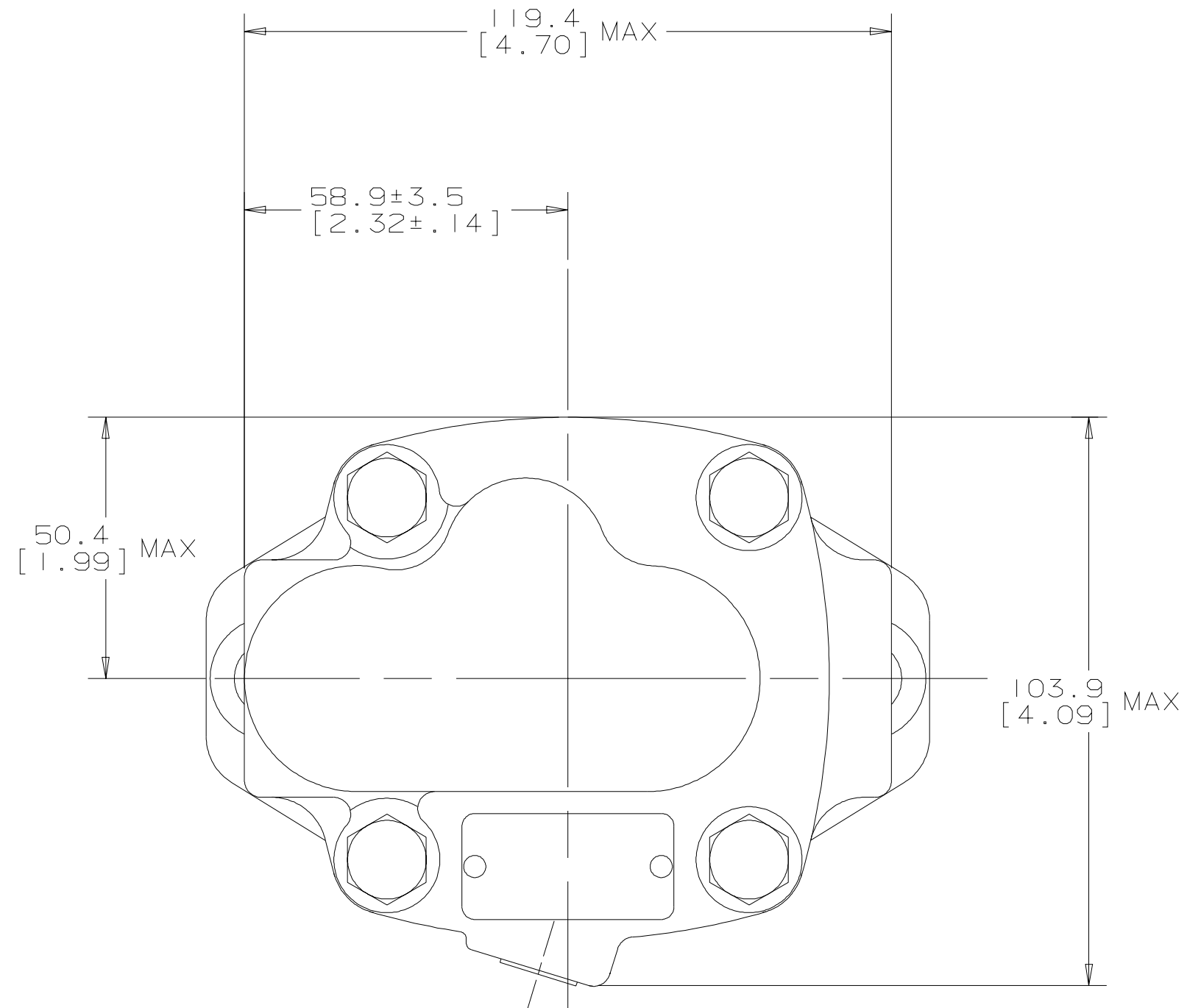
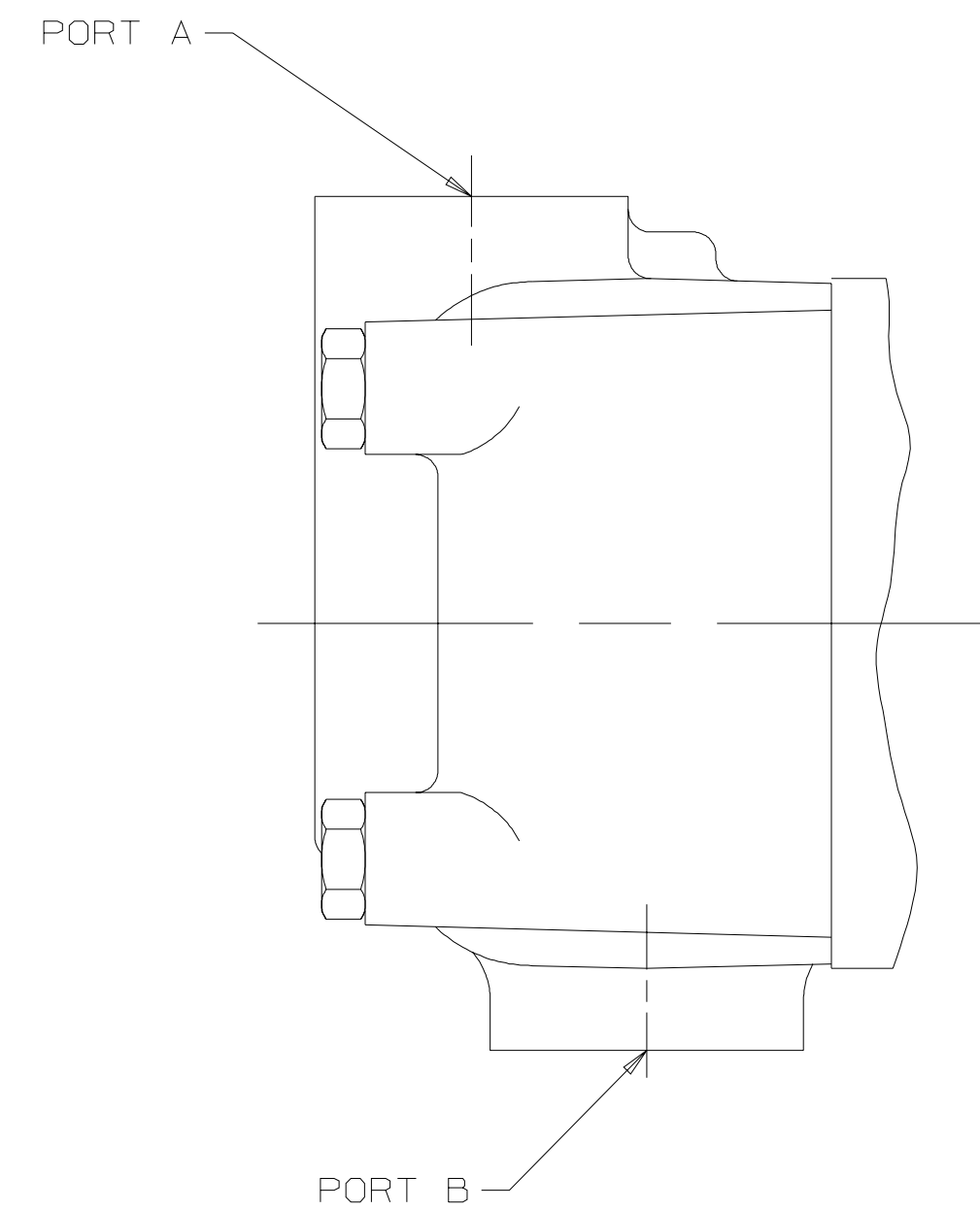


SYM	REVISION	BY	DATE	ECN
A	ENGINEERING RELEASE	AGJ	5-26-93	22833
B	(4A)NOTE 2 WAS MOUNTING TYPE: C	AGJ	5/13/02	41044
C	-1(7C)REMOVED 57.2[2.25]MAX -2(7C) 58.2±0.8 [2.29±.03] WAS 57.2[2.25] MAX -3(7C)ADDED 117.1 [4.61]MAX	AGJ	12-22-03	46075
D	REVISED	HRK	8/21/09	16454



NOTE

1 ROTATION:
 STANDARD: WHEN FACING SHAFT END OF MOTOR, SHAFT TO ROTATE; CLOCKWISE WHEN PORT "A" IS PRESSURIZED COUNTERCLOCKWISE WHEN PORT "B" IS PRESSURIZED
 REVERSE: WHEN FACING SHAFT END OF MOTOR, SHAFT TO ROTATE; CLOCKWISE WHEN PORT "B" IS PRESSURIZED COUNTERCLOCKWISE WHEN PORT "A" IS PRESSURIZED

2 MOUNTING TYPE: AC
 STANDARD, 2 BOLT: Ø 82.6 [3.25] PILOT Ø 13.59 [.535] HOLES ON Ø 106.4 [4.19] BOLT CIRCLE "SAE A"

REVIEWED FOR CLASSIFICATION PER ESP-042

DRAWING BASED ON ANSI Y14.5M-1982

UNLESS OTHERWISE SPECIFIED ALL DIMENSIONS ARE IN: INCHES MILLIMETERS

THE REPRODUCTION, DISTRIBUTION, AND UTILIZATION OF THIS DOCUMENT, AS WELL AS THE COMMUNICATION OF ITS CONTENTS TO OTHERS WITHOUT EXPLICIT AUTHORIZATION IS PROHIBITED. OFFENDERS WILL BE HELD LIABLE FOR THE PAYMENT OF DAMAGES. ALL RIGHTS RESERVED IN THE EVENT OF THE GRANT OF A PATENT, UTILITY MODEL, OR DESIGN. (PER ISO 16016)

Danfoss

TOLERANCES:
 .X -----
 .XX +REF
 .XXX +ONLY

DRYIN A. JOHNSON
 BY/DATE 3-18-93 MATERIAL/HEAT TREAT

CHECKED SDR 6-24-93

ENGRG. SJJ 6-28-93 TITLE 2000 SERIES MOTOR INSTALL

BY/DATE METALLURGY

UNSPECIFIED DRAFT ANGLES ARE THIRD ANGLE PROJECTION

UNSPECIFIED DRAFT ANGLES ARE THIRD ANGLE PROJECTION

DRAWING FORMAT CADD MANUAL DO NOT SCALE

MICROINCHES NUMBER A-665-002
 MICROINCHES (MICROINCHES)

SCALE 1/1 SHEET 1 OF 1