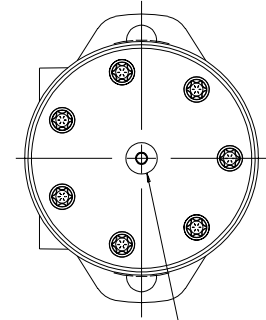
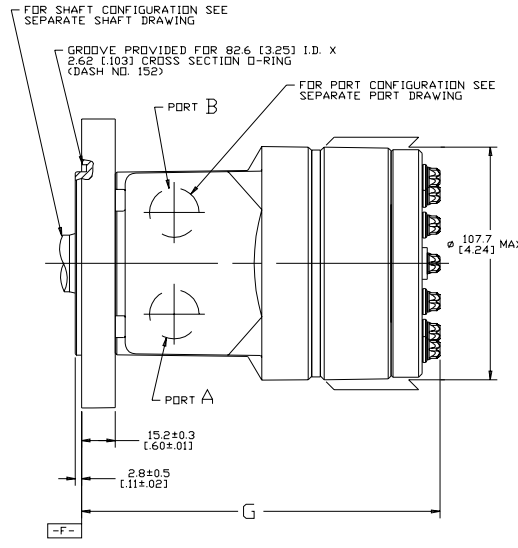
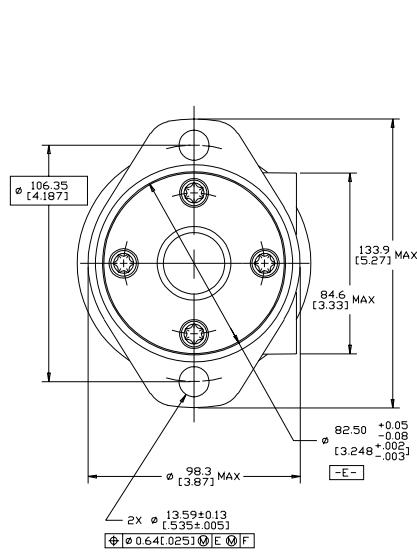


DISP. CODE	G	MAX
036	138.0	[5.43]
046	140.3	[5.52]
057	142.5	[5.61]
073	146.0	[5.75]
088	149.1	[5.87]
101	151.8	[5.98]
114	154.5	[6.08]
137	159.4	[6.28]
182	169.0	[6.66]
227	178.4	[7.02]

REV	DESCRIPTION	BY	CHK	DATE	ECN
A	ENGINEERING RELEASE	SMM		06-09-04	48257
B	-1>(6C) WAS 131.4[5.17] MAX -2>(7B) WAS Ø96.8[3.81] MAX	SRM		04-07-04	ECR8166
C	-1> (8A) NOTE 2 WAS MOUNTING FLANGE : "A.S. 1-...." -2> (8A) NOTE 3 WAS CASE DRAIN : 2...	TTV	CSG	04-08-16	0070053



G 1/4 BSP STRAIGHT THD CASE DRAIN PORT WHEN REQUIRED, REMOVE O-RING PLUG. DRAIN LINE MUST BE CONNECTED THRU 3.4 bar [50 lbf/in²] MIN CHECK VALVE TO RESERVOIR

- NOTE
- ROTATION: STANDARD: WHEN FACING SHAFT END OF MOTOR, SHAFT TO ROTATE CLOCKWISE WHEN PORT "A" IS PRESSURIZED COUNTERCLOCKWISE WHEN PORT "B" IS PRESSURIZED
REVERSE : WHEN FACING SHAFT END OF MOTOR, SHAFT TO ROTATE CLOCKWISE WHEN PORT "B" IS PRESSURIZED COUNTERCLOCKWISE WHEN PORT "A" IS PRESSURIZED
 - MOUNTING FLANGE: AA,AD,AN = 2 BOLT STD: Ø82.6 [3.25] X 3.0 [1.18] PILOT Ø13.59 [5.35] MOUNTING HOLES DN Ø106.2 [4.18] BC.
 - CASE DRAIN: 02 = G 1/4 BSP STRAIGHT THD PORT (END CAP)

REVIEWED FOR CLASSIFICATION PER ESP-042

UNLESS OTHERWISE SPECIFIED ALL DIMENSIONS ARE IN MILLIMETERS	DRAWING BASED ON ANSI Y14.5M-1982
NOTE: TOLERANCES	THE REPRODUCTION, DISTRIBUTION AND UTILIZATION OF THIS DOCUMENT, AS WELL AS THE COMMUNICATION OF ITS CONTENTS TO OTHERS WITHOUT EXPRESS AUTHORIZATION IS PROHIBITED. OFFENDERS WILL BE HELD LIABLE FOR THE PAYMENT OF DAMAGES. ALL PROCEEDS GO TO THE SUPPORT OF THE GOVT OF A PATRIOTIC UTILITY MODEL OR DESIGN (PER ISO 18018)
UNSPECIFIED ANGLE ARE	THIRD ANGLE PROJECTION
UNSPECIFIED DRAWING FORMAT (SEE DWG. MAN. 1)	DO NOT SCALE
UNSPECIFIED METALLURGY	MATERIAL/HEAT TREAT
UNSPECIFIED FINISH	FINISH
UNSPECIFIED SURFACE	TITLE
UNSPECIFIED DIMENSIONS	NUMBER
UNSPECIFIED DIMENSIONS	SCALE
UNSPECIFIED DIMENSIONS	SHEET

S MOTOR INSTALLATION

A-1470-201

SCALE 1/1 SHEET 1 OF 1