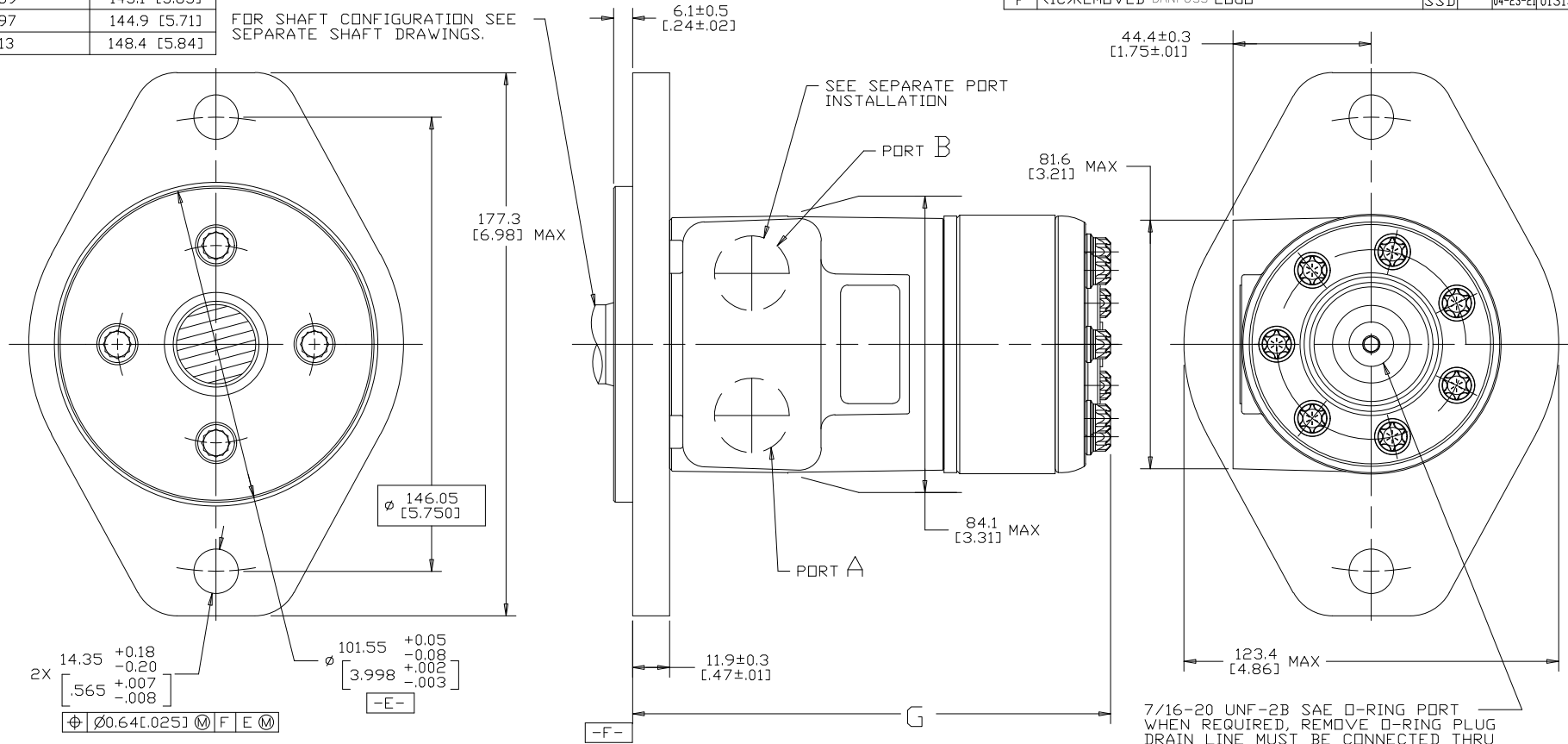


DISPLACEMENT CODE	G MAX	DISPLACEMENT CODE	G MAX
022	129.4 [5.09]	141	154.8 [6.09]
025	130.2 [5.13]	179	163.4 [6.43]
028	129.4 [5.09]	226	173.8 [6.84]
035	133.2 [5.24]	451	224.7 [8.85]
045	133.2 [5.24]		
059	136.2 [5.36]		
073	139.5 [5.49]		
089	143.1 [5.63]		
097	144.9 [5.71]		
113	148.4 [5.84]		

FOR SHAFT CONFIGURATION SEE SEPARATE SHAFT DRAWINGS.



REV	DESCRIPTION	BY	CHK	DATE	ECN
A	ENGINEERING RELEASE	RCB	AGJ	9/8/99	M22089
B	-1)(<3C) WAS 177.1/[6.97] MAX -2)(<1B) WAS 122.1/[4.81] MAX	SJP		04-07-04	46856
C	-1)REVISED PICTORIALY -2)(<4D) UPDATED TABULATION FOR G MAX -3)(<2B) REMOVED DIM 2.5L10] MAX -4)UPDATED NOTE AS PER ESP-022-69	AAB		02-17-14	0054756
D	(<1C) ADDED DANFOSS LOGO TO END CAP	AAB		01-22-15	0061684
E	(<3A) NOTE 3 WAS CASE DRAIN: 1 = .4375-20...	YUP		07-27-15	0065202
F	(<1C) REMOVED DANFOSS LOGO	SSD		04-23-21	0131343

2X $\begin{matrix} 14.35 & +0.18 \\ & -0.20 \\ \hline .565 & +.007 \\ & -.008 \end{matrix}$

$\begin{matrix} \phi 101.55 & +0.05 \\ & -0.08 \\ \hline 3.998 & +.002 \\ & -.003 \end{matrix}$

$\begin{matrix} \phi 146.05 \\ \hline 5.750 \end{matrix}$

$\begin{matrix} \phi 0.64 & \pm 0.025 \\ \hline M & F & E & M \end{matrix}$

-E-

NOTES

- ROTATION
STANDARD: WHEN FACING SHAFT END OF MOTOR, SHAFT TO ROTATE CLOCKWISE WHEN PORT "A" IS PRESSURIZED. COUNTERCLOCKWISE WHEN PORT "B" IS PRESSURIZED.

REVERSE: WHEN FACING SHAFT END OF MOTOR, SHAFT TO ROTATE COUNTERCLOCKWISE WHEN PORT "B" IS PRESSURIZED. COUNTERCLOCKWISE WHEN PORT "A" IS PRESSURIZED.
- MOUNTING:
DD = 2 BOLT STD: $\phi 101.60$ [4.000] X 6.10 [.240] PILOT, $\phi 14.35$ [.565]
MOUNTING HOLES ON $\phi 146.05$ [5.750]. B.C. (SAE B)
- CASE DRAIN:
01 = .4375-20 UNF-2B SAE O-RING PORT (END CAP)

REVIEWED FOR CLASSIFICATION PER ESP-042

UNLESS OTHERWISE SPECIFIED ALL DIMENSIONS ARE IN INCHES <input type="checkbox"/> MILLIMETERS [INCHES] <input checked="" type="checkbox"/>		DRAWING BASED ON ANSI Y14.5M-1982	
TOLERANCES .X ± ---- .XX ± ---- .XXX ± ---- ∅ ± ----°		THE REPRODUCTION, DISTRIBUTION, AND UTILIZATION OF THIS DOCUMENT, AS WELL AS THE COMMUNICATION OF ITS CONTENTS TO OTHERS WITHOUT EXPLICIT AUTHORIZATION IS PROHIBITED. OFFENDERS WILL BE HELD LIABLE FOR THE PAYMENT OF DAMAGES. ALL RIGHTS RESERVED IN THE EVENT OF THE GRANT OF A PATENT, UTILITY MODEL, OR DESIGN. (PER ISO 15016)	
UNSPECIFIED RADII ARE: ----		DRAWN RCB BY/DATE 9/8/99	MATERIAL/HEAT TREAT --
UNSPECIFIED DRAFT ANGLES ARE: ----°		CHECKED AGJ BY/DATE 9/13/99	TITLE H SERIES MOTOR INSTALLATION
THIRD ANGLE PROJECTION		ENGRG RVA BY/DATE 9/13/99	NUMBER A-37-429
C SIZE		METALLURGY BY/DATE ----	SCALE 1/1
DO NOT SCALE		ARITHMETICAL AVERAGE	SHEET 1 OF 1

