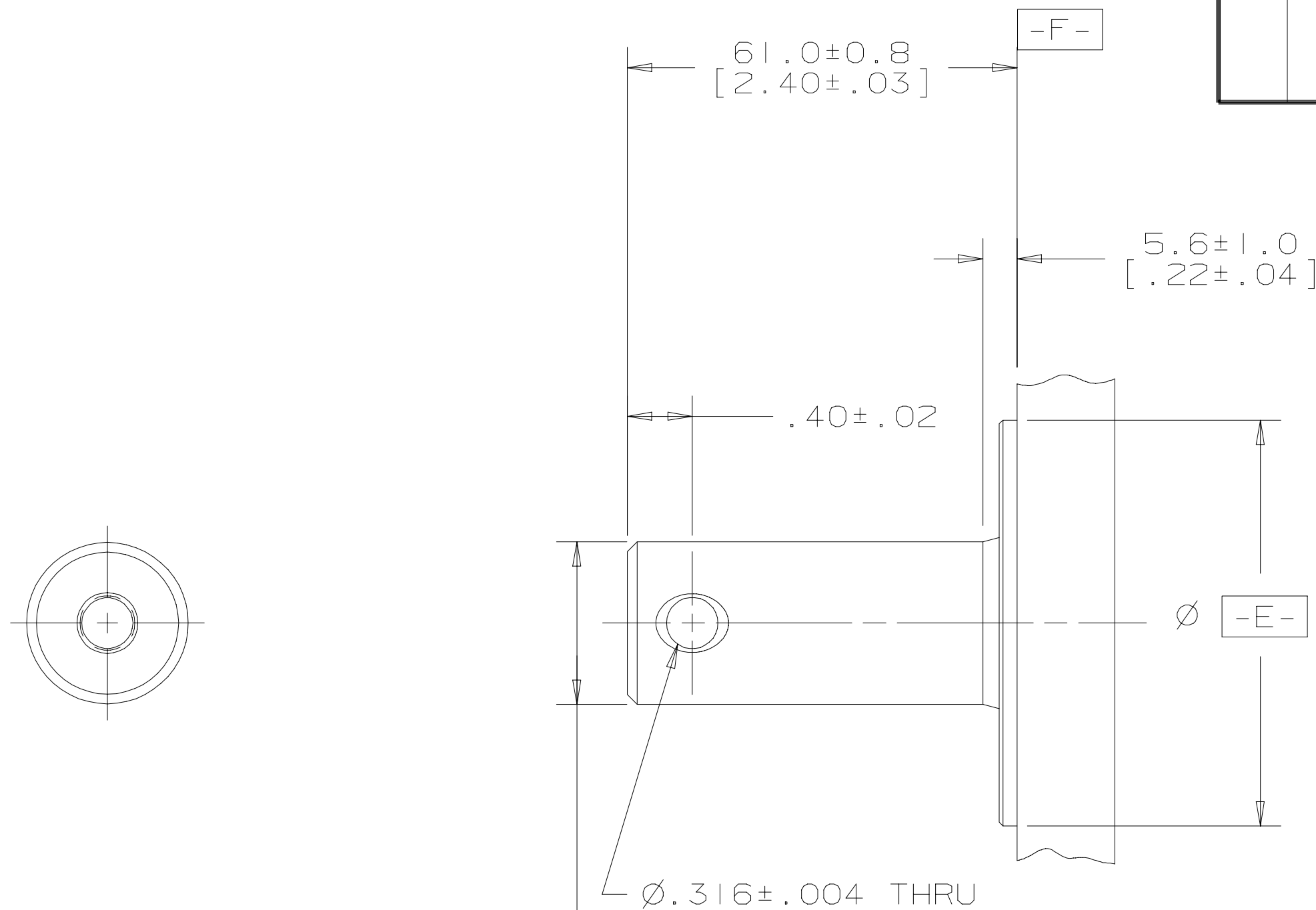


SYM	REVISION	BY	DATE	ECN
A	RELEASE FOR SAMPLES AND ESTIMATE	GCB	12-18-97	M15710D
B	-1) OUTPUT SHAFT 86 WAS 85 -2) ENGINEERING RELEASE	GCB	12-18-97	M15710F

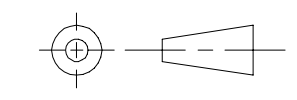


\varnothing 25.40^{+0.00}_{-0.03}
 [1.000^{+0.000}_{-0.001}]
 ↗ 0.26 [.010] E
 ⊥ 0.08 [.003] F

OUTPUT SHAFT

86 = \varnothing 25.4 [1.00] STRAIGHT WITH 8.03 [.316] DIA.
 CROSSHOLE 10.2 [.40] FROM END 15.7 [.62]
 EXTRA LENGTH

S M G

UNLESS OTHERWISE SPECIFIED ALL DIMENSIONS ARE IN INCHES <input type="checkbox"/> MILLIMETERS [INCHES] <input checked="" type="checkbox"/> TOLERANCES .X ± - .XX ± - .XXX ± - < - UNSPECIFIED RADII ARE - - - - UNSPECIFIED DRAFT ANGLES ARE - - - - DRAWING FORMAT CADD <input checked="" type="checkbox"/> MANUAL <input type="checkbox"/>	DRAWING BASED ON ANSI Y14.5M-1982	
	THE REPRODUCTION, DISTRIBUTION, AND UTILIZATION OF THIS DOCUMENT, AS WELL AS THE COMMUNICATION OF ITS CONTENTS TO OTHERS WITHOUT EXPLICIT AUTHORIZATION IS PROHIBITED. OFFENDERS WILL BE HELD LIABLE FOR THE PAYMENT OF DAMAGES. ALL RIGHTS RESERVED IN THE EVENT OF THE GRANT OF A PATENT, UTILITY MODEL, OR DESIGN. (PER ISO 16016)	
	DRAWN BY/DATE GCB 12-19-97 CHECKED BY/DATE AGJ 12-23-97 ENGRG BY/DATE RVA 12-23-97 METALLURGY BY/DATE - - - -	MATERIAL/HEAT TREAT TITLE SHAFT INSTALLATION
	 THIRD ANGLE PROJECTION DO NOT SCALE	MICROINCHES <input type="checkbox"/> MICROMETERS [MICROINCHES] <input type="checkbox"/> ARITHMETICAL AVERAGE <input checked="" type="checkbox"/> NUMBER A-109-087 SCALE 1/1 SHEET 1 OF 1

